



## **On-line PICASSO PROJECT**

**Comprehensive Catalogue Raisonné  
Prof. Dr. Enrique Mallen**

**1965**



**Tête de jeune garçon.** Mougins. 1-January/1965. Oil on canvas. 55,3 x 46,4 cm. Sotheby's. #125, N08851, 05/03/12.

**OPP.65:173**; PP.65:001; Z.XXV:2



**Tête d'homme II.** Mougins. 1-January/1965. Oil on canvas [OIC]. 61 x 50 cm. Private collection.

**OPP.65:299**; PP.65:002; Z.XXV:3



**Femme nue.** Mougins. 3-January/1965. Oil on canvas. 115,8 x 88,5 cm. Christie's. #0068, 1900, 11/06/07.

**OPP.65:109**; PP.65:004; Z.XXV:1; JR.09\*:137p

---

**Femme nue assise dans un fauteuil I.** Mougins. [3~5-August] 3~5, 8-January/1965. Oil on canvas. 116 x 89 cm. Sotheby's. #16, L17002, 03/01/17. Formerly Sotheby's. #49, N08314, 05/08/07.

**OPP.65:086**; PP.65:005; Z.XXV:6; PA.73b\*:n/a; PA.89d\*:59; WW.91:627p





**Tête d'homme.** Mougins. 5~6-January/1965. Oil on canvas [OiC]. 61 x 50 cm. Private collection.

**OPP.65:300**; PP.65:006; Z.XXV:4



**Femme nue assise II.** Mougins. 7-January/1965. Oil on canvas. 116 x 89 cm. The Beverly & Raymond Sackler Collection.

**OPP.65:080**; PP.65:007; Z.XXV:7; HP.66:181p; JL.71:67p; PD.69:101p; PH.96:34; WW.91:626p





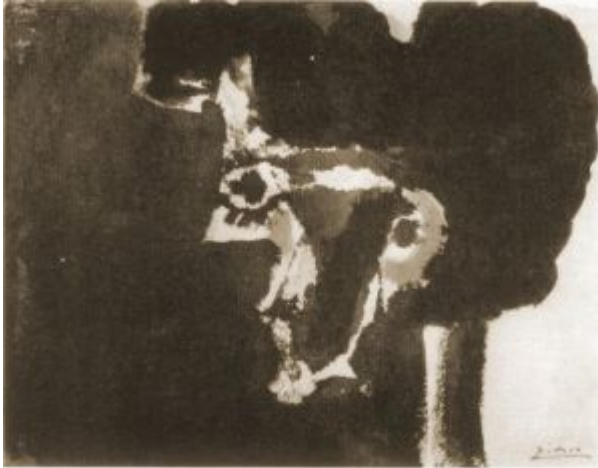
**Femme nue assise dans un fauteuil I.** Mougins. 7~8-January/1965. Oil on canvas. 130 x 97 cm. Sotheby's. #55, N08022, 11/04/04.

**OPP.65:056**; PP.65:008; Z.XXV:8; LU.94\*:75

**Le homard dans un panier.** Mougins. 10-January/1965. Oil on canvas. [89 x 116] 89 x 115,8 cm. Christie's. #62C, 3783, 11/12/15. Formerly Sotheby's. #401, 11/11/99.

**OPP.65:248**; PP.65:009; Z.XXV:9;  
DL.93\*:n/a; HP.66:183p





**Tête de profil.** Mougins. 11-January/1965. Wash.  
50,5 x 64 cm. Private collection.

**OPP.65:051**; PP.65:012; Z.XXV:17

---

**Le homard et le chat.** Mougins. 11-  
January/1965. Oil on canvas. 73 x 92 cm.  
The Solomon R. Guggenheim Museum,  
NYC. (Inv 91.3916). Thannhauser  
Collection. Gift, Justin K. Thannhauser.

**OPP.65:070**; PP.65:011; Z.XXV:10;  
AH.13:20; HN.13:337p; PF.10\*:39;  
TC.92:91p





**Femme assise à la galette des rois II.** Mougins. 11-January/1965. Oil on canvas [OIC]. 92 x 73 cm. Private collection. Formerly Christie's. #52, 11/05/91.

**OPP.65:301**; PP.65:010; Z.XXV:5

**Femme assise à la galette des rois.** Mougins. 11, 24-January/1965. Oil on canvas. 100 x 73 cm. Sotheby's. #1029, HK1258, 10/05/22.

**OPP.65:302**; PP.65:022; Z.XXV:11; ST.88\*:95





**Visage.** Vallauris. 11-January~11-February/1965. Round plate, thrown white earthenware, incised & painted [Variant of *Visage*]. 42,7 cm. Catherine Hutin-Blay Collection, Paris. Formerly Jacqueline Roque Picasso Collection.

**OPP.65:294**; PD.19\*:129

---

**Chat, homard et oursin II.** Mougins. 13-January/1965. Oil on canvas [OiC]. 60 x 73 cm. Private collection.

**OPP.65:303**; PP.65:013; Z.XXV:12





**Chat et homard.** Mougins. 13~14-January/1965. Oil on canvas. 73 x 100 cm. Fondation Beyeler, Riehen/Basel. (Inv 05.2). Formerly Christie's. #34, 7021, 02/07/05.

**OPP.65:060**; PP.65:014; Z.XXV:13; AH.13\*:118; HP.66:184p

---

**Homard et chat sur la plage I.** Mougins. 14-January/1965. Oil on canvas. 89 x 130 cm. Helly Nahmad Collection, Monaco/London. Formerly Christie's. #73, 2477, 11/01/11; Galerie Louise Leiris, Paris.

**OPP.65:009**; PP.65:015; Z.XXV:14; AH.13:21; AU.89\*:59; CC.67\*:12; CP.95:142p; HN.13\*:339p; HP.66:185p; HU.68\*:124; PA.84a\*:176p; WS.93\*:157







**Chat et crabe sur la plage II.** Mougins. 14-January/1965. Oil on canvas. 89 x 130 cm. Private collection, Switzerland. Courtesy Thomas Ammann Fine Art.

**OPP.65:098**; PP.65:016; Z.XXV:15;  
BA.03a\*:278; HP.66:185p; KG.71:34; KG.85:34;  
WS.07\*:17; WS.93\*:158

---

**Buste de femme couronnée. Profil.** Mougins. 16-January/1965. Oil on canvas [Oic]. 65 x 54 cm. Private collection.

**OPP.65:304**; PP.65:017; Z.XXV:16







**Visage.** Vallauris. 17-January/1965. Ceramic plate, edition 100. 42 cm. Christie's. #152, 6683, 10/09/02.

**OPP.65:030**; AR:528; B.III:174

---

**Visage de face aux taches.** Vallauris. 17-January/1965. White earthenware plate, edition 100. 42 cm. Sotheby's. #113, W03703, 03/20/03.

**OPP.65:034**; AR:526; B.III:172





**Visage.** Vallauris. 17-January/1965. White earthenware plate, edition 100. 42 cm. Sotheby's. #96, W04701, 02/04/04.

**OPP.65:042**; AR:529; B.III:175

---

**Visage.** Vallauris. 17-January/1965. White earthenware plate, edition 100. 42 cm. Sotheby's. #177, W04714, 10/20/04.

**OPP.65:054**; AR:532; B.III:178





**Visage de face en creux.** Vallauris. 17-January/1965. White earthenware plate, edition 100. 42 cm. Sotheby's. #179, W05710, 03/23/05.

**OPP.65:061**; AR:527; B.III:173

---

**Visage.** Vallauris. 17-January/1965. White earthenware plate, edition 100. 42 cm. Sotheby's. #264, W05711, 10/26/05.

**OPP.65:075**; AR:525; B.III:171





**Visage.** Vallauris. 17-January/1965. Unglazed white earthenware plate. 42,2 cm. Christie's. #441, 4232, 06/25-26/12.

**OPP.65:136**; AR:524; B.III:170

---

**Visage.** Vallauris. 17-January/1965. White earthenware plate, edition 100. 27,3 cm. Christie's. #75, 2523, 04/27/11.

**OPP.65:158**; AR:533; B.III:179





**Visage.** Vallauris. 17-January/1965. Red earthenware plate, edition 100. 26 cm. Christie's. #74, 2523, 04/27/11.

---

**OPP.65:159**; AR:534

---

**Visage.** Vallauris. 17-January/1965. white earthenware dish, edition 100. 42,6 cm. Christie's. #72, 2523, 04/27/11.

---

**OPP.65:160**; AR:531; B.III:177





**Visage en creux, soleil.** Vallauris. 17-January/1965. Painted & glazed ceramic; large round plate. 41,9 cm. Sotheby's. #335, N10148, 11/13/19. Formerly Marina Picasso Collection.

**OPP.65:296**

**Visage.** Vallauris. 17-January/1965. Painted & glazed ceramic; large round plate. 42 cm. Sotheby's. #340, L20004, 02/05/20. Formerly Marina Picasso Collection.

**OPP.65:297**; KU.99\*:76







**Visage de face.** Vallauris. 17-January/1965. White earthenware clay. 42 cm. Private collection.

**OPP.65:406**; AR:530; B.III:176

---

**Visage.** Mougins. 17-January~11-February/1965. White clay, glazed & painted in engobes. 42,5 cm. Fundación Almine & Bernard Ruiz-Picasso para el Arte.

**OPP.65:093**; GS.03:1.130





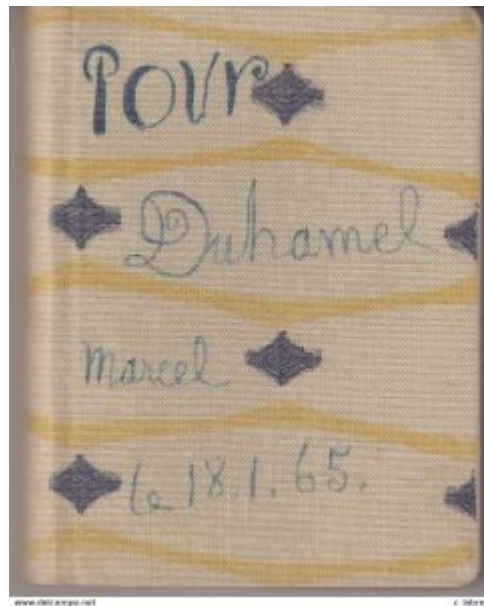
**Visage.** Vallauris. 17-January~11-February/1965.  
White clay decorated with engobe & partially  
glazed. 42,5 x 42,5 x 4,5 cm. Museu Picasso,  
Barcelona. Donation 1982.

**OPP.65:179**; MPB:112.436

---

**Picasso de Poche: Le Carnet des Carnets (Pour  
Marcel Duchamel).** Mougins. 18-January/1965.  
Facsimile. 11,3 x 14,3 cm. Musée Picasso, Paris. Also  
Museu Picasso, Barcelona. Donation Fundació  
Noguera, 2000.

**OPP.65:128**; MPB:113.036c; AM.08:119p





**L'aubade.** Mougins. 19~20-January/1965. Oil on canvas. 130 x 195 cm. Petit Palais, Musée d'Art Moderne, Geneva.

**OPP.65:004**; PP.65:018; Z.XXV:19; CT.23\*:42; GC.96:279p; HN.13:304p; HP.66:187p; KB.01\*:174; MA.17b\*:113; PA.20j\*:188; WW.91:628p

**Les deux amies.** Mougins. 20, 26-January/1965. Oil on canvas. 81 x 100 cm. Kunstmuseum Bern. (Inv G.2224). Schenkung Walter und Gertrud Hadorn, Bern, 1977.

**OPP.65:081**; PP.65:028; Z.XXV:18; AP.11:135p; HN.13:305p; HP.66:189p; KB.01\*:175; UP.00:1091; WS.07\*:45; WS.11:367p; WW.91:629p





**Femme allongé les jambes croisées.** Mougins. 21~23-January/1965. Gouache & India ink on paper. 50 x 64 cm. Musée d'Art Moderne, Belfort. Donation Maurice Jardot.

**OPP.65:119**; PP.65:020; Z.XXV:21;  
MA.17b\*:110; TG.88\*:78; TO.14\*:146;  
UP.00:1086; WS.07\*:44; WS.11:280p;  
WS.93\*:156

---

**Nu couché sur fond vert.** Mougins. 24-January/1965. Oil on canvas. 89 x 116 cm. Private collection.

**OPP.65:120**; PP.65:023; Z.XXV:20;  
TG.88\*:31; UP.00:1090; WS.07\*:20





**Femme nue peignant assise dans un fauteuil.** Mougins. 25-January/1965. Oil on canvas. 100 x 81,2 cm. Private collection.

**OPP.65:003**; PP.65:025; Z.XXV:24; BA.90a\*:46; MA.91a\*:43; MM.85a\*:54; PJ.14\*:207p; TO.14\*:151

---

**Le peintre.** Mougins. 25-January/1965. Oil on canvas. 100 x 81 cm. Private collection.

**OPP.65:110**; PP.65:026; Z.XXV:25; WR.96:162p







**Femme nue allongée les jambes croisées.**  
Mougins. 25-January/1965. Pencil on paper. 32 x 50,5 cm. Private collection.

**OPP.65:306**; PP.65:024; Z.XXV:23; NY.71b\*:95

---

**Le peintre III.** Mougins. 25-January/1965. Oil on canvas [OIC]. 100 x 81 cm. Private collection. Formerly Christie's. #57, 12/09/97.

**OPP.65:307**; PP.65:027; Z.XXV:26





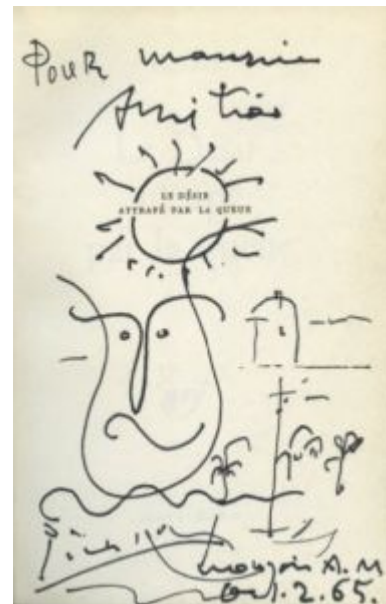


**Autoportrait.** Mougins. 26-January/1965. Oil on canvas. 65 x 54 cm. Kunsthalle Bremen. Der Kunstverein in Bremen.

**OPP.65:118**; PP.65:029; Z.XXV:31; GB.14\*:92; HH.68\*:64; KG.71:128; KG.85:128; MF.10\*:97p; TI.71:82p

**Figure.** Mougins. 1-February/1965. Ink on page of *Le désir attrapé par la queue*, published by Gallimard, 1964. S/U. Private collection.

**OPP.65:242**





**Carnaval.** Mougins. 5-February/1965. Linoleum cut in brown & black, edition 160. 64 x 52,5 cm. Christie's. #204, 6468, 07/03/01.

**OPP.65:018**; B.I:1193; Ba:1356; MM.11b\*:79

**Le peintre et son modèle.** Mougins. 7-February/1965. Linoleum cut on Arches, edition 160. 52,5 x 62,6 cm. Christie's. #205, 6468, 07/03/01.

**OPP.65:019**; B.I:1194; Ba:1357; CC.01\*:57p





**L'atelier de l'artiste.** Mougins. 8-February/1965. Crayons on paper. 26,5 x 21 cm. Private collection.

**OPP.65:010**

**Femme nue et personnage.** Mougins. 8-February/1965. Enhanced linoleum cut. 62 x 75 cm. Private collection.

**OPP.65:305**; PP.65:030; Z.XXV:22





**Le thé: deux femmes nues et un chat.**

Mougins. 8-February/1965. Linoleum cut on Arches wove paper, edition 50. [53 x 63,5] 52,9 x 63,8 cm. Sotheby's. #255, N08193, 04/28/06.

**OPP.65:089**; B.II:1851; Ba:1358

---

**Visage.** Vallauris. 10-February/1965. Painted & glazed ceramic round plate. 27 cm. Sotheby's. #681, L16005, 02/05/16. Formerly Marina Picasso Collection.

**OPP.65:269**; GE.98a\*:60; KU.99\*:75





**Visage.** Vallauris. 11-February/1965. White clay, incised, decorated with engobe & partially glazed. 42,1 x 42,1 x 4,2 cm. Museu Picasso, Barcelona. Donation 1982.

**OPP.65:178**; MPB:112.468

---

**Visage.** Vallauris. 11-February/1965. Painted & glazed ceramic large round plate. 42,5 cm. Sotheby's. #684, L16005, 02/05/16. Formerly Marina Picasso Collection.

**OPP.65:270**; TK.86\*:CM-24







**Paysage.** Mougins. 15-February/1965. Oil on canvas [OIC]. 54 x 65 cm. Private collection.

**OPP.65:311**; PP.65:031; Z.XXV:32; BS.67a\*:57

---

**Portrait d'homme.** Mougins. 16-February/1965. Oil on plywood. 32,5 x 28,5 cm. Fundación Almine & Bernard Ruiz-Picasso para el Arte.

**OPP.65:183**; PP.65:034; Z.XXV:30; MA.23a\*:34; TB.01\*:16; TB.02\*:16







**Paysage à Mougins.** Mougins. 16-February/1965. Oil on canvas. 66 x 54,8 cm. Private collection. Formerly Sotheby's. #145, N09711, 05/17/17; Helly Nahmad Collection, Monaco/London.

**OPP.65:239**; PP.65:035; Z.XXV:34; CT.23\*:43; HN13\*:341p

---

**Tête d'homme II.** Mougins. 16-February/1965. Oil on canvas [OIC]. 37,4 x 24,7 cm. Private collection.

**OPP.65:309**; PP.65:033; Z.XXV:28





**Tête I.** Mougins. 16-February/1965. Oil on cardboard [OïC]. 28 x 17,5 cm. Private collection.

**OPP.65:310**; PP.65:032; Z.XXV:29

**Paysage à Mougins III.** Mougins. 17-February/1965. Oil on canvas. 73 x 92 cm. Museum Sammlung Rosengart, Luzern. Siegfried & Angela Rosengart Collection.

**OPP.65:149**; PP.65:038; Z.XXV:36;  
TO.99\*:184; WS.93\*:159





**Buste d'homme.** Mougins. 17-February/1965. Oil on canvas.  
65 x 50 cm. Koller Auktionen. #3247, 507841, 07/02/22.

**OPP.65:308**; PP.65:036; Z.XXV:27

---

**Paysage (Terre et mare) II.** Mougins.  
17-February/1965. Oil on canvas [Oic]. 89  
x 116 cm. Private collection.

**OPP.65:312**; PP.65:037; Z.XXV:33;  
JL.66\*:278





**Corrida (Para Hans Erni).** Mougins. 18-February/1965. Ink on bookcover of José Delgado alias Pepe Illo, La Tauromaquia. 35 x 49,5 cm. Private collection.

**OPP.65:251**; JC.01b\*:135

---

**L'aubade I.** Mougins. 20-February/1965. Oil on canvas. [130] 129,5 x 195 cm. David and Ezra Nahmad Collection. Formerly Christie's. #83, 6316, 06/28/00; Didier Imbert Collection, Paris.

**OPP.65:007**; PP.65:041; Z.XXV:42; AU.89\*:60; HN.13\*:313p; PA.20j\*:193





**Tête de femme couchée II.** Mougins. 20-February/1965. Oil on canvas [OïC]. 54 x 65 cm. Private collection.

**OPP.65:313**; PP.65:039; Z.XXV:37

---

**Tête de femme couchée IV.** Mougins. 20-February/1965. Oil on canvas [OïC]. 54 x 65 cm. Private collection.

**OPP.65:314**; PP.65:040; Z.XXV:38







**Collages III.** Mougins. 20-February/1965. Oil & collage on canvas. 64,8 x 46,4 cm. Sotheby's. #32, N10944, 04/14/22.

---

**OPP.65:386**

---

**Homme portant un enfant IV.** Mougins. 22-February/1965. Oil on canvas. 100 x 81,5 cm. Sotheby's. #1033, HK1315, 04/05/23. Formerly Russeck Gallery, Palm Beach; Christie's. #53, 1429, 11/03/04.

---

**OPP.65:057**; PP.65:044; Z.XXV:47; JL.66\*:271





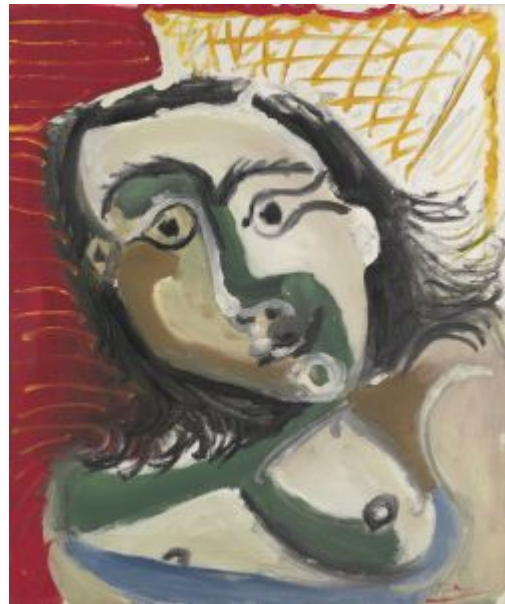
**Paysage à mougins II.** Mougins. 22-February/1965. Oil on canvas. 54 x 65 cm. Bridget R. Koch Collection. Formerly Sotheby's. #111, N08790, 11/03/11; The Israel Museum, Jerusalem. Gift Mr. Joseph Spreiregen, Cannes.

**OPP.65:181**; PP.65:042; Z.XXV:35; CT.23\*:44

---

**Buste de femme I.** Mougins. 22-February/1966. Oil on canvas. 65 x 54 cm. Sotheby's. #29, L16002, 02/03/16.

**OPP.65:264**; PP.65:043; Z.XXV:39; SY.02\*:13





**Femme étendue se tenant la tête (fond jaune et vert) III.** Mougins. 22-February~7-April/1965. Oil on canvas. 53,5 x 65 cm. Catherine Hutin-Blay Collection, Paris. Formerly Jacqueline Roque Picasso Collection.

**OPP.65:123**; PP.65:101; Z.XXV:100; BA.90a\*:47; LE.07\*:82; MA.91a\*:44; PD.19\*:84; TO.14\*:147

---

**Homme à l'enfant II.** Mougins. 24-February/1965. Oil on canvas. 99,5 x 81 cm. Fundación Almine & Bernard Ruiz-Picasso para el Arte.

**OPP.65:184**; PP.65:045; Z.XXV:46; MA.23a\*:49; MG.04b\*:123; TB.01\*:17; TB.02\*:17







**La fleur (Pour ma femme Jacqueline)**. Mougins. 24-February/1865. Oil on corrugated cardboard. 130 x 50 cm. Private collection.

**OPP.65:219**; PP.65:048; Z.XXV:49; MR.03\*:159p

---

**Homme portant un enfant III**. Mougins. 24-February/1965. Oil on canvas [OiC]. 65 x 54 cm. Private collection.

**OPP.65:315**; PP.65:046; Z.XXV:40





**Homme portant un enfant III.** Mougins. 24-February/1965. Oil on canvas [OiC]. 92 x 73 cm. Private collection. Formerly Sotheby's. #407, 05/11/88.

**OPP.65:317**; PP.65:047; Z.XXV:45

**Yeux (Pour Broder).** Mougins. 25-February/1965. Wax crayon & charcoal on cover of book H el ene Parmelin, Les Dames de Mougins. 30 x 27,5 cm. Private collection.

**OPP.65:211**; RD.08\*:134p





**Le sculpteur I (Pierre Reverdy, Sable Mouvant)**. Mougins. 26-February/1965. Aquatint with drypoint on wove paper, edition 220. [38 x 27,5] 38,2 x 27,6 cm. Sotheby's. #258, N08087, 04/29/05.

**OPP.65:062**; B.I:1192; Ba:1161; GC:136.10

---

**Buste d'homme**. Mougins. 26-February/1965. Oil on canvas. 61 x 46 cm. Private collection.

**OPP.65:234**; PP.65:049; Z.XXV:43; AH.13\*:119; BS.67a\*:58





**Sculpteur travaillant à un buste de femme II.** Mougins. 26-February/1965. Aquatint & etching. 38,5 x 27,5 cm. Musée Picasso, Paris. Jacqueline Roque Picasso Collection. Dation 1990.

**OPP.65:288**; Ba:1179; MPP:1990.133



**Sculpteur travaillant à un buste de femme II.** Mougins. 26-February/1965. Aquatint & etching, edition 50. 39 x 28 cm. Galería Enrique Guerrero. 2005.

**OPP.65:067**; B.I:1195; Ba:1179.Bb2



**Le sculpteur II.** Mougins. 26~27-February/1965. Aquatint with drypoint on wove paper, edition 50. 38 x 27,2 cm. Sotheby's. #271, L04160, 07/01/04.

**OPP.65:037**; B.I:1196; Ba:1178.III.Bb; CH.04\*:34; GE.66\*:22; GS.83\*:131; ME.82a\*:171; WW.91:614p

---

**Le sculpteur (Pierre Reverdy, Sable Mouvant).** Mougins. 27-February/1965. Etching with aquatint on Auvergne, edition 20; on tissue-thin Japon, edition 20. 38,5 x 27,5 cm. Sotheby's. #132, L03161, 07/01/03.

**OPP.65:040**; B.I:1187; Ba:1156; GC:136.5





**Portrait de Shakespeare (Louis Aragon, Shakespeare).**  
Mougins. 28-February/1965. Lithograph on wove paper, edition 25. 22,2 x 17,7 cm. Christie's. #347, 1322, 04/28/03.

**OPP.65:012**; B.I:1197; GC:131; M:405

---

**Deux femmes au miroir III (Pierre Reverdy, Sable Mouvant).** Mougins. 1-March/1965. Aquatint on Auvergne, edition 60. 57,8 x 45,9 cm. Christie's. #269, 6399, 12/05/00.

**OPP.65:013**; B.I:1185; Ba:1154; GC:136.3







**Deux femmes I.** Mougins. 1-March/1965. Aquatint with drypoint on wove paper, edition 50. 38 x 27,4 cm. Sotheby's. #155, L02192, 07/02/02.

**OPP.65:028**; B.I:1198; Ba:1180.Bb2; GE.66\*:23

---

**Le modèle IV.** Mougins. 1-March/1965. Aquatint with etching on wove paper, edition 50. [39 x 28] 38 x 27,5 cm. Kunsthalle Bremen. Der Kunstverein in Bremen, Kupferstichkabinett. Also Sotheby's. #272, L04160, 07/01/04.

**OPP.65:050**; B.I:1200; Ba:1182.Bb2; CH.04\*:32; GB.14\*:167; GE.66\*:24; PD.19\*:85





**Femmes nues au miroir II.** Mougins. 1-March/1965. Aquatint & drypoint on wove paper, edition 50. [39 x 28] 38 x 27 cm. Sotheby's. #290, L04162, 12/02/04.

**OPP.65:059**; B.I:1199; Ba:1181.IIBb; GE.66\*:35

---

**Deux femmes au miroir.** Mougins. 1-March/1965. Aquatint & drypoint on Auvergne wove paper. 38,5 x 27,6 cm. Christie's. #123, 19776, 09/16-28/21.

**OPP.65:381**; Ba:1154.B





**Le modèle.** Mougins. 1-March/1965. Aquatint & etching. 38 x 27,5 cm. Musée Picasso, Paris. Achat en vente publique en 2013 (Vente Hommage à Aldo Crommelynck).

**OPP.65:384**; Ba:1182; MPP:2013.1.5

---

**Nu accoudé (Pierre Reverdy, Sable Mouvant).** Mougins. [March]/1965. Aquatint on Auvergne wove paper, edition 60. 58,2 x 46,2 cm. Christie's. #271, 6399, 12/05/00.

**OPP.65:015**; B.I:1190; Ba:1159; GC:136.8





**Trois femmes.** Mougins. 2-March/1965. Drypoint, edition 50. 23,3 x 33 cm. Sotheby's. #218, L06161, 10/03/06.

**OPP.65:036**; B.I:1206; Ba:1184.Bb2; GE.66\*:33

**Deux femmes IV.** Mougins. 2-March/1965. Drypoint on Richard de Bas, edition 50. 31,1 x 41,3 cm. Graphische Sammlung der ETH Zürich. Also Christie's. #189, 1705, 09/26/06.

**OPP.65:095**; B.I:1203; Ba:1188.Bb2; GE.66\*:21; MD.02\*:334p





**Le modèle I.** Mougins. 2-March/1965. Aquatint, edition 50.  
38 x 27,3 cm. Sotheby's. #212, L07161, 09/20/07.

**OPP.65:106**; B.I:1204; Ba:1183.Bb2; GE.66\*:25

---

**Enveloppe autographe à Monsieur  
Sassier.** Mougins. 2-March/1965. Red ink.  
S/U. Artcurial. #326, 1331, 10/22/07.  
Formerly Inès and Gérard Sassier Collection.

**OPP.65:115**





**Modèle au repos dans un fauteuil III.** Mougins. 2-March/1965. Aquatint & etching, on Auvergne Richard de Bas, edition 50. 38,7 x 27,6 cm. Christie's. #152, 2019, 07/31/08.

**OPP.65:117**; B.I:1205; Ba:1187.Bb2; GE.66\*:26; JR.09\*:188p

---

**Deux femmes III.** Mougins. 2-March/1965. Drypoint, edition 50. 22,9 x 33 cm. Christie's. #155, 2215, 10/27-28/09.

**OPP.65:141**; B.I:1202; Ba:1186.Bb2; GE.66\*:17







**Peintre au travail II.** Mougins. 2-March/1965. Aquatint on Richard de Bas wove paper. 38,5 x 27,5 cm. Sotheby's. #141, N08896, 11/01/12.

**OPP.65:207**; B.I:1201; Ba:1185.Bb2; GE.66\*:32

**Deux femmes III.** Mougins. 2-March/1965. Drypoint. 23,1 x 33,2 cm. Musée Picasso, Paris. Dation Jacqueline Picasso, 1990.

**OPP.65:385**; Ba:1186; MPP:1990.134





**Couple I.** Mougins. 3-March/1965. Drypoint, edition 50. 48 x 61 cm. Sotheby's. \$50, N09647, 10/23-24/17.

**OPP.65:139**; B.I:1207; Ba:1189.Bb2; GE.66\*:20

**Femmes nues au miroir.** Mougins. 9-March/1965. Aquatint & drypoint. 27 x 37,2 cm. Sotheby's. #79, L12160, 03/29/12.

**OPP.65:192**; B.I:1208; Ba:1190.IIBb2; GE.66\*:37





**Peintre et modèle V.** Mougins. 10-March/1965.  
Etching & aquatint. 22,5 x 32 cm. Sotheby's.  
#282, L05161, 09/27/05.

**OPP.65:026**; B.I:1213; Ba:1195.Bb2;  
GE.66\*:15; GM.81\*:334

---

**Homme et femme II.** Mougins. 10-  
March/1965. Aquatint & drypoint on off-  
white wove paper, edition 50. 22,5 x 32,2  
cm. Sotheby's. #319, N08123, 10/28/05.

**OPP.65:027**; B.I:1210; Ba:1192.Bb2;  
GE.66\*:12; PD.19\*:86





**Le peintre et son modèle I.** Mougins. 10-March/1965. Aquatint & etching, edition 50. [22,2 x 32,4] 22,5 x 32,5 cm. Kunsthalle Bremen. Der Kunstverein in Bremen, Kupferstichkabinett. Also Sotheby's. #133, L03160, 03/25/03.

**OPP.65:035**; B.I:1209; Ba:1191.Bb2;  
GB.14\*:168; GE.66\*:38

---

**Venus et l'Amour VII.** Mougins. 10-March/1965. Aquatint on wove paper, edition 50. [26,7 x 37,2] 27,5 x 38 cm. Christie's. #602, 1555, 09/28/05.

**OPP.65:072**; B.I:1214; Ba:1196.Bb2;  
GE.66\*:39





**Deux femmes assises au miroir III.** Mougins. 10-March/1965. Aquatint & etching. 22,2 x 32 cm. Sotheby's. #192, PF1334, 02/25/13.

**OPP.65:221**; B.I:1211; Ba:1193.Bb2; GE.66\*:13

---

**Femme au miroir avec un spectateur IV.** Mougins. 10-March/1965. Aquatint & etching. 22 x 31,9 cm. Sotheby's. #193, PF1334, 02/25/13.

**OPP.65:222**; B.I:1212; Ba:1194.Bb2; GE.66\*:14





**Peintre et modèle V.** Mougins. 10-March/1965. Etching and aquatint, on Richard de Bas wove paper. 32,5 x 43,5 cm. Bonhams. #31AR, 26710, 03/23/21.

**OPP.65:379**; Ba:1195.Bb1

---

**Tête d'homme barbu VI (Pierre Reverdy, Sable Mouvant).** Mougins. 10~15-March/1965. Etching with aquatint on Auvergne, edition 60. 37,3 x 27,1 cm. Christie's. #270, 6399, 12/05/00.

**OPP.65:014**; B.I:1189; Ba:1158; GC:136.7







**Dans l'atelier.** Mougins. 12-March/1965. Aquatint, on Auvergne Richard de Bas paper, edition 50. 22 x 32 cm. Kunsthalle Bremen. Der Kunstverein in Bremen, Kupferstichkabinett. Also Sotheby's. #320, N08123, 10/28/05.

**OPP.65:073**; B.I:1215; Ba:1197.Bb2;  
GB.14\*:169; GE.66\*:18

---

**Dans l'atelier II.** Mougins. 12-March/1965. Aquatint & drypoint on Richard de Bas wove. 22,1 x 32,3 cm. Kunsthalle Bremen. Der Kunstverein in Bremen, Kupferstichkabinett. Also Sotheby's. #144, N08896, 11/01/12.

**OPP.65:208**; B.I:1216; Ba:1198.Bb2;  
GB.14\*:170; GE.66\*:19





**Peintre et sa toile, avec un modèle IV.**

Mougins. 12-March/1965. Aquatint & etching. 27 x 37,5 cm. Kunsthalle Bremen. Der Kunstverein in Bremen, Kupferstichkabinett. Also Sotheby's. #199, PF1334, 02/25/13.

**OPP.65:223**; B.I:1218; Ba:1299.Bb2;  
GB.14\*:171; GE.66\*:27; KK.93:21

---

**Dans l'atelier III.** Mougins. 12-March/1965. Aquatint & drypoint on Auvergne Richard de Bas, edition 50. [22,5 x 32,5] 22,2 x 32 cm. Christie's. #363, 1344, 02/12/04.

**OPP.65:043**; B.I:1217; Ba:1199.Bb2;  
GE.66\*:16; KK.93:20





**Dans l'atelier III.** Mougins. 13-March/1965.  
Drypoint & aquatint on Auvergne wove paper,  
edition 50. 32 x 46,3 cm. Kunsthalle Bremen. Der  
Kunstverein in Bremen, Kupferstichkabinett. Also  
Christie's. #91, 6683, 10/09/02.

**OPP.65:029**; B.I:1220; Ba:1202.IIBb2;  
GB.14\*:173; GE.66\*:41; KK.93:22

---

**Dans l'atelier: toile avec quatre  
femmes I.** Mougins. 13-March/1965.  
Aquatint & drypoint. 32 x 46,7 cm.  
Kunsthalle Bremen. Der Kunstverein in  
Bremen, Kupferstichkabinett. Also  
Sotheby's. #200, PF1334, 02/25/13.

**OPP.65:224**; B.I:1219; Ba:1201.Bb2;  
GB.14\*:172; GE.66\*:40





**Dans l'Atelier: Peintre et sa toile avec un modèle assis IV.** Mougins. 13-March/1965. Aquatint & drypoint. 24,5 x 38 cm. Kunsthalle Bremen. Der Kunstverein in Bremen, Kupferstichkabinett. Also Sotheby's. #202, PF1334, 02/25/13.

**OPP.65:225**; B.I:1221; Ba:1203.IIBb2; GB.14\*:174; GE.66\*:29; KK.93:23

---

**Dans l'atelier I.** Mougins. 14-March/1965. Etching with aquatint, edition 50. 25 x 38,5 cm. Kunsthalle Bremen. Der Kunstverein in Bremen, Kupferstichkabinett. Also Sotheby's. #153, L02192, 07/02/02.

**OPP.65:031**; B.I:1222; Ba:1204.Bb2; GB.14\*:175; GE.66\*:42





**Dans l'atelier II.** Mougins. 14-March/1965. Aquatint & drypoint on Richard de Bas, edition 50. 24,8 x 38,4 cm. Kunsthalle Bremen. Der Kunstverein in Bremen, Kupferstichkabinett. Also Museum of Fine Arts, Budapest. (Inv L.68.7). Gift of Daniel-Henry Kahnweiler, 1968.

**OPP.65:088**; B.I:1223; Ba:1205.Bb2;  
BD.16\*:90; GB.14\*:176; GE.66\*:30; GS.83\*:132

---

**Dans l'atelier II.** Mougins. 15-March/1965. Aquatint & drypoint on Richard de Bas, edition 50. 24,8 x 38,1 cm. Kunsthalle Bremen. Der Kunstverein in Bremen, Kupferstichkabinett. Also Christie's. #177, 1428, 11/02/04.

**OPP.65:058**; B.I:1225; Ba:1207.Bb2;  
GB.14\*:178; GE.66\*:31





**Dans l'atelier I.** Mougins. 15-March/1965. Aquatint & drypoint on wove paper. 24,8 x 38,3 cm. Kunsthalle Bremen. Der Kunstverein in Bremen, Kupferstichkabinett. Also Sotheby's. #146, N08896, 11/01/12.

**OPP.65:209**; B.I:1224; Ba:1206.Bb2;  
GB.14\*:177; GE.66\*:43; KK.93:25

**Peintre au repos avec modèle de dos IV.** Mougins. 15-March/1965. Aquatint & drypoint. 27 x 37,6 cm. Sotheby's. #206, PF1334, 02/25/13.

**OPP.65:226**; B.I:1226; Ba:1209.Bb2;  
GE.66\*:28







**Peintre au repos avec modèle assis en tailleur**  
V. Mougins. 15-March/1965. Aquatint. 24,6 x 38,2  
cm. Sotheby's. #207, PF1334, 02/25/13.

**OPP.65:227**; B.I:1227; Ba:1210.Bb2;  
GE.66\*:36; KK.93:48

---

**Le peintre et son modèle.** Mougins. 15-  
March/1965. Oil on canvas [OïC]. 38 x 46  
cm. Private collection.

**OPP.65:316**; PP.65:050; Z.XXV:41





**Dans l'atelier III.** Mougins. 15~16-March/1965. Aquatint & etching. 24,7 x 38 cm. Kunsthalle Bremen. Der Kunstverein in Bremen, Kupferstichkabinett. Also Sotheby's. #210, PF1334, 02/25/13.

**OPP.65:017**; B.I:1228; Ba:1208.Bb2; GB.14\*:179; GE.66\*:44; KK.93:26

---

**Buste d'homme barbu II (Maurice Bessner).** Mougins. 17-March/1965. Oil on canvas. [61 x 50] [60,9 x 50,1] 61 x 50,2 cm. Helly Nahmad Collection, Monaco/London. Formerly Christie's. #479, 1572, 11/02/05; Sotheby's. #246, 11/11/92; Sotheby's. #19, 11/15/89.

**OPP.65:008**; PP.65:052; Z.XXV:51; HN.13\*:361p; NY.71b\*:96





**Le peintre au chapeau.** Mougins. 17-March/1965. Oil on canvas. 73 x 60,5 [60] cm. Helly Nahmad Collection, Monaco/London. Formerly Sotheby's. #107, N07990, 05/06/04; Galerie Beyeler, Basel.

**OPP.65:039**; PP.65:051; Z.XXV:44; CG.81\*:70; GS.83\*:17; HN.13\*:363p; KG.71:127; KG.85:127

**Paysage de Vallauris.** Vallauris. 17-March/1965. Oil on canvas. 60 x 73 cm. Espace Tajan. #47, 1737, 06/28/17. Formerly Galería Senda Collection, Barcelona.

**OPP.65:216**; FC.00\*:112; MG.02b\*:n/a





**Le singe et le photographe.** Mougins. 18-March/1965. Oil on canvas. 60 x 73 cm. Galeria Mayoral, Barcelona. Formerly José Mestre Collection, Barcelona; Christie's. #213, 6592, 06/26/02.

**OPP.65:020**; PP.65:053; Z.XXV:50

**Dans l'atelier: modèle au transat.** Mougins. 18-March/1965. Aquatint & etching. 39,4 x 56 cm. Sotheby's. #212, PF1334, 02/25/13.

**OPP.65:228**; B.I:1229; Ba:1212.Bb2; CH.04\*:36; GE.66\*:34





**Photographe et singe.** Mougins. 19-March/1965.  
Oil on canvas. 50 x 61. Fundación Almine &  
Bernard Ruiz-Picasso para el Arte.

**OPP.65:318**; PP.65:054; Z.XXV:48; MA.23a\*:35

---

**Tête d'homme.** Mougins. Spring/1965. Oil on  
canvas. 65 x 54 cm. Helly Nahmad Collection,  
Monaco/London.

**OPP.65:241**; PP.65:170; Z.XXV:179;  
HN.13\*:369p; JL.66\*:280





**Portrait de Verlaine.** Mougins. 22-March/1965. Ink & wash on cardboard. 80 x 50 cm. Musée National d'Art Moderne, Centre Georges Pompidou, Paris. (Inv AM.1984-657). Donation Louise et Michel Leiris, 1984.

**OPP.65:083**; PP.65:055; Z.XXV:52

**Le peintre et son modèle II.** Mougins. 23-March/1965. Oil on canvas. 54 x 65 cm. GAM Galerie d'Art. 2005. Formerly Christie's. #68, 06/27/88.

**OPP.65:066**; PP.65:057; Z.XXV:54;  
MG.73:12







**Le peintre et son modèle I.** Mougins. 23-March/1964. Oil on canvas. 60 x 73 cm. Catherine Hutin-Blay Collection, Paris. Formerly Jacqueline Roque Picasso Collection.

**OPP.65:245**; PP.65:056; Z.XXV:55; TO.14\*:142

**Le modèle dans l'atelier IV.** Mougins. 23-March/1965. Oil on cardboard [Oic]. 20,5 x 27 cm. Private collection.

**OPP.65:320**; PP.65:058; Z.XXV:56





**Nu au chevalet III.** Mougins. 23-March [~1-November]/1965. Oil on canvas. 60 x 73 cm. Catherine Hutin-Blay Collection, Paris. Formerly Jacqueline Roque Picasso Collection.

**OPP.65:152**; PP.65:195; Z.XXV:53;  
BA.23\*:284p; PD.19\*:83; TO.14\*:145;  
TO.99\*:187

**Le modèle dans l'atelier VI.** Mougins. 24-March/1965. Oil on canvas. [38] 38,1 x 46 cm. Christie's. #47, 7353, 02/06/07. Formerly Sotheby's. #330, N08090, 05/04/05; Helly Nahmad Gallery, London; Galería Marta Cervera, Rojo y Negro, Madrid; Galerie Beyeler, Basel.

**OPP.65:063**; PP.65:063; Z.XXV:63;  
BS.67a\*:59; KG.71:281; KG.85:281;  
LO.98b\*:n/a; MD.02\*:348p; RT.99\*:84





**Le modèle dans l'atelier III.** Mougins. 24-March/1965. Oil on canvas. 50 x 61 cm. The National Museum of Western Art, Tokyo. (Inv P.1974-0004). Donated by Mr. Ryuzaburo Umehara.

**OPP.65:090**; PP.65:061; Z.XXV:59; IB.90\*:35; LI.00\*:126; TO.14:98p; TS.90\*:P74; UR.92\*:33

---

**Le modele dans l'atelier.** Mougins. 24-March/1965. Oil on canvas. 50 x 61 cm. Sotheby's. #71, N08485, 11/03/08.

**OPP.65:122**; PP.65:062; Z.XXV:60





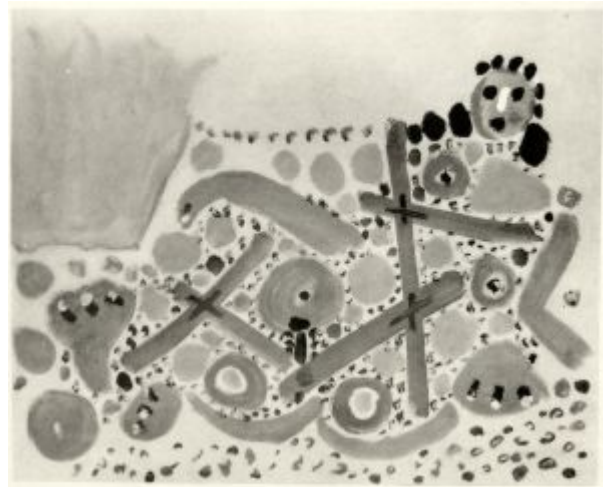
**Le modèle dans l'atelier II.** Mougins. 24-March/1965. Oil on canvas. 50 x 60,6 cm. Sotheby's. #318, N09741, 11/15/17. Formerly Helly Nahmad Collection, Monaco/London.

**OPP.65:238**; PP.65:060; Z.XXV:58; GS.83:18; HN.13\*:135p; TK.86\*:P-24

---

**Nu allongé.** Mougins. 24-March/1965. Oil on canvas [OiC]. 60 x 73 cm. Private collection.

**OPP.65:321**; PP.65:059; Z.XXV:57





**Le modèle dans l'atelier VIII.** Mougins. 24-March/1965. Oil on canvas [OIC]. 54 x 65 cm. Private collection.

**OPP.65:322**; PP.65:064; Z.XXV:64

---

**Le modèle dans l'atelier V.** Mougins. 24-March ~ 2-April/1965. Oil on canvas. 50 x 65 cm. Sotheby's. #45, L08007, 06/25/08.

**OPP.65:116**; PP.65:087; Z.XXV:61;  
LO.71b\*:17







**Le modèle dans l'atelier VII.** Mougins. 24, 26, 27-March~7-April/1965. Oil & Ripolin on canvas. [46 x 54,5] 46,2 x 54,9 cm. Christie's. #42, 20661, 03/01/22. Formerly Sotheby's. #28, L02002, 02/05/02.

**OPP.65:021**; PP.65:096; Z.XXV:62; LC.66\*:13

**Le peintre et son modèle.** Mougins. 26-March/1965. Oil on canvas. 38,2 x 46,4 cm. Sotheby's. #331, N11402, 05/16/24. Formerly Helly Nahmad Collection, Monaco/London; Christie's. #318, 6685, 02/04/03.

**OPP.65:032**; PP.65:067; Z.XXV:68; HN.13\*:139p; NY.22i\*:n/a







**Le peintre et son modèle.** Mougins. 26-March/1965. Oil on canvas. 33 x 41 cm. Helly Nahmad Collection, Monaco/London. Formerly Opera Gallery. 2011; Sotheby's. #371, L06005, 02/08/06.

**OPP.65:084**; PP.65:069; Z.XXV:70; HN.13\*:137p

---

**Le peintre et son tableau II.** Mougins. 26-March/1965. Oil on canvas. 50 x 61 cm. Private collection.

**OPP.65:151**; PP.65:065; Z.XXV:66; TO.14\*:144; TO.99\*:186





**Le peintre et son modèle III.** Mougins. 26-March/1965. Oil on canvas. 50 x 61 cm. Private collection.

**OPP.65:213**; PP.65:066; Z.XXV:67; MF.01\*:51

**Le peintre et son modèle V.** Mougins. 26-March/1965. Oil on canvas. 45,8 x 55,3 cm. Helly Nahmad Collection, Monaco/London. Formerly Christie's. #323, 06/28/94.

**OPP.65:235**; PP.65:068; Z.XXV:69; PE.01a\*:88





**Nu assis I.** Mougins. 26~31-March/1965. Oil on canvas [OiC]. 54 x 65 cm. Private collection.

**OPP.65:323**; PP.65:082; Z.XXV:65

---

**Nu allongé et tête d'homme de profil III.** Mougins. 27-March/1965. Oil on canvas. 60 x 73 cm. Christie's. #25, 17191, 06/18/19.

**OPP.65:289**; PP.65:071; Z.XXV:73;  
FB.13\*:103p





**Nu allongé et tête d'homme de profil II.**  
Mougins. 27-March/1965. Oil on canvas [OIC]. 60  
x 73 cm. Private collection.

**OPP.65:325**; PP.65:070; Z.XXV:72



**Nu allongé et tête d'homme de profil I.**  
Mougins. 27-March~2-April/1965. Oil on  
canvas [OIC]. 50 x 61 cm. Private  
collection.

**OPP.65:324**; PP.65:088; Z.XXV:71



**Nu allongé et tête d'homme de profil IV.**  
Mougins. 28-March/1965. Oil on canvas. 33 x 41  
cm. Sotheby's. #46, PF9006, 05/28/09.

**OPP.65:137**; PP.65:074; Z.XXV:77

**Nu allongé et tête d'homme de profil I.**  
Mougins. 28-March/1965. Oil on canvas  
[OIC]. 33 x 41 cm. Private collection.

**OPP.65:326**; PP.65:072; Z.XXV:74







**Nu allongé et tête d'homme de profil II.**  
Mougins. 28-March/1965. Oil on canvas [Oic]. 33 x 41 cm. Private collection.

**OPP.65:327**; PP.65:073; Z.XXV:75

---

**Nu couché III.** Mougins. 28~31-March/1965. Oil on canvas [Oic]. 33 x 41 cm. Private collection.

**OPP.65:328**; PP.65:083; Z.XXV:76







**Le peintre et son modèle II.** Mougins. 29-March/1965. Oil on canvas. 49,5 x 61 cm. Fundación Almine & Bernard Ruiz-Picasso para el Arte.

**OPP.65:185**; PP.65:075; Z.XXV:78; MA.23a\*:2; TB.01\*:18; TB.02\*:18

**Nu allongé et tête d'homme de profil IV.** Mougins. 29-March/1965. Oil on canvas. 50 x 61 cm. Sotheby's. #53, N08898, 11/05/12.

**OPP.65:206**; PP.65:077; Z.XXV:81





**Peintre au travail VI.** Mougins. 29-March/1965.  
Oil on canvas. 61 x 50 cm. Private collection.

**OPP.65:271**; PP.65:079; Z.XXV:83; LC.66\*:15

---

**Nu allongé et tête d'homme de profil I.**  
Mougins. 29-March/1965. Oil on canvas  
[OIC]. 50 x 61 cm. Private collection.

**OPP.65:329**; PP.65:076; Z.XXV:79





**Nu allongé et tête de profil V.** Mougins. 29-March/1965. Oil on canvas [OïC]. 50 x 61 cm. Private collection.

**OPP.65:330**; PP.65:078; Z.XXV:82; GS.83\*:19

---

**Tête d'homme et nu couché III.**

Mougins. 29-March~2-April/1965. Oil on canvas. 50 x 61 cm. Private collection.

**OPP.65:246**; PP.65:089; Z.XXV:80; TO.14\*:143





**Le peintre et son modèle II.** Mougins. 30-March/1965. Oil on canvas. 92 x 73 cm. Catherine Hutin-Blay Collection, Paris. Formerly Jacqueline Roque Picasso Collection.

**OPP.65:124**; PP.65:081; Z.XXV:85; BE.09\*:114; LE.07\*:83; LM.17\*:n/a; MR.03\*:161p; TO.14\*:149

---

**Le peintre et son tableau.** Mougins. 30-March/1965. Oil on canvas. [92 x 73] 91 x 73,4 cm. Sprengel Museum, Hannover.

**OPP.65:214**; PP.65:080; Z.XXV:84; LV.15\*:n/a; MF.01\*:52; MF.10\*:98p





**Le peintre au travail II.** Mougins. 31-March/1965. Oil & Ripolin on canvas. 100 x 81 cm. Museu Picasso, Barcelona. Acquisition, 1968.

**OPP.65:111**; MPB:70.810; PP.65:085; Z.XXV:87; BA.23\*:280p; CA.88:272; CR.98:113p; DG.88\*:n/a; JL.14\*:111; LI.00\*:n/a; LU.86\*:n/a; LZ.88\*:n/a; NH.94:78p; PD.09:428p; TO.95b:68p; UP.00:1083; YP.13\*:65

**Le peintre I.** Mougins. 31-March/1965. Oil on canvas. 100 x 81,5 cm. Private collection.

**OPP.65:215**; PP.65:084; Z.XXV:86; MF.01\*:53





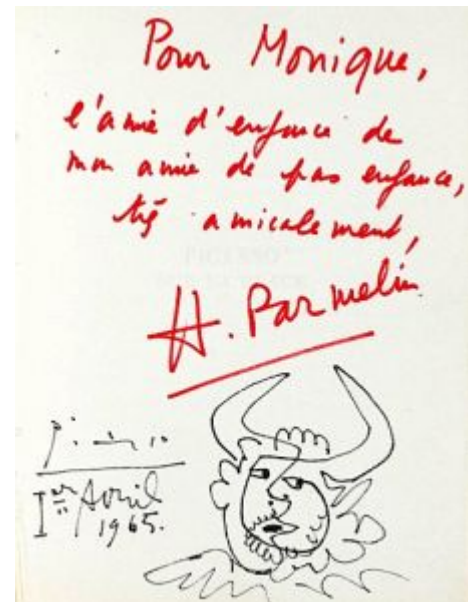


**Poisson (Pour la petite Patricia).** Mougins. 1-April/1965. Pen & ink on paper. 30 x 27 cm. Private collection. Formerly Sotheby's. #271, 2893, 10/15/92.

**OPP.65:107**

**Tête de faune barbu.** Mougins. 1-April/1965. Black felt-pen on inside page of book Hélène Parmelin, Picasso sur la place. 21,8 x 16,2 cm. Artcurial. #204, 1175, 04/03/07.

**OPP.65:114**







**Tête de garçon.** Mougins. 1-April/1965. Crayon & pencil on paper. [31,5 x 24] 31.7 x 24.1 cm. Los Angeles County Museum of Art. (Inv M.2005.70.112). Partial, fractional and promised gift of Janice & Henri Lazarof.

**OPP.65:143**; PP.65:086; Z.XXV:174

---

**Tête d'homme barbu V.** Mougins. 2-April/1965. Oil on canvas. 40,9 x 33 cm. M. S. Rau Antiques, New Orleans. 2018.

**OPP.65:202**; PP.65:093; Z.XXV:92





**Tête d'homme IV.** Mougins. 2-Avril/1965. Oil on canvas. 41,3 x 33 cm. Van de Weghe Fine Art. Formerly Sotheby's. t#122, N08899, 11/07/12.

**OPP.65:205**; PP.65:092; Z.XXV:94



**Tête d'homme I.** Mougins. 2-Avril/1965. Oil on canvas [OiC]. 41 x 33 cm. Private collection. Formerly Sotheby's. #205, 06/28/89.

**OPP.65:331**; PP.65:090; Z.XXV:89



**Tête d'homme III.** Mougins. 2-April/1965. Oil on canvas.  
[41 x 33] 40,9 x 32,9 cm. Sotheby's. #13, PF2246,  
04/21/22. Formerly Sotheby's. #378, 05/10/89.

**OPP.65:332**; PP.65:091; Z.XXV:90

---

**Tête d'homme II.** Mougins. 2~4-April/1965. Oil on  
canvas. 41 x 33 cm. Sotheby's. #327, N08024,  
11/05/04.

**OPP.65:055**; PP.65:097; Z.XXV:88; TK.80\*:26





**Tête d'homme barbu VI.** Mougins. 2~4-April/1965. Oil on canvas. 61 x 50,2 cm. Christie's. #34, 1102, 02/06/13.

**OPP.65:220**; PP.65:098; Z.XXV:93

---

**Buste d'homme I (Autoportrait).** Mougins. 3-April/1965. Oil on canvas. 61 x 50 cm. Gagosian Gallery, New York.

**OPP.65:203**; PP.65:094; Z.XXV:91





**Le peintre III.** Mougins. 3-April/1965. Oil on canvas [OïC]. 61 x 50 cm. Private collection. Formerly Sotheby's. #82, 04/01/81.

**OPP.65:333**; PP.65:095; Z.XXV:96; BS.67a\*:60

**Homme assis II (Autoportrait).** Mougins. 3, 4-April/1965. Oil on canvas. 100 x 81 cm. Catherine Hutin-Blay Collection, Paris. Formerly Jacqueline Roque Picasso Collection.

**OPP.65:001**; PP.65:099; Z.XXV:95; BA.90a\*:48; GL.84\*:35; LM.17\*:n/a; MA.86\*:47; MA.91a\*:45; MM.06\*:63; MM.85a\*:55; MR.03\*:164p; PA.82a\*:n/a; PB.21:163; PD.19\*:1; UP.00:1097; WR.96:163p; WW.91:632p; YP.13\*:63







**Portrait de Jacqueline.** Mougins. 4~5-April/1965. Oil on canvas. 100 x 81 cm. Catherine Hutin-Blay Collection, Paris. Formerly Jacqueline Roque Picasso Collection.

**OPP.65:002**; PP.65:100; Z.XXV:97; BA.90a\*:49; GL.84\*:36; MA.86\*:48; MA.91a\*:46; MM.06\*:64; MM.85a\*:56; MR.03\*:165p; PA.82a\*:n/a; PD.19\*:2; PJ.14\*:209p; UP.00:1095; WW.91:631p

---

**Paysage.** Mougins. 6-April/1965. Felt-tip pen. 22 x 29 cm. Private collection.

**OPP.65:279**; CE.04\*:101







**Méditerranée.** Mougins. 6-April/1965. Felt-tip pen. 23 x 30 cm. Piasa. #15, 2075, 03/15/23.

**OPP.65:280**; CE.04\*:102

---

**Buste d'homme I.** Mougins. 7-April/1965. Oil on canvas [OIC]. 61 x 50 cm. Private collection.

**OPP.65:334**; PP.65:102; Z.XXV:98





**Buste d'homme II.** Mougins. 7-April/1965. Oil on canvas [Oic]. 61 x 46 cm. Private collection.

**OPP.65:335**; PP.65:103; Z.XXV:99

---

**Buste d'homme barbu.** Mougins. 8-April/1965. Oil on canvas. [81,3 x 65,4] 83,8 x 68,9 cm. M. S. Rau Antiques, New Orleans. Formerly Helly Nahmad Collection, Monaco/London; Christie's. #47, 11/14/90.

**OPP.65:240**; PP.65:104; Z.XXV:101; HN.13\*:365p





**Homme et femme nue.** Mougins. 9-April/1965.  
Oil on canvas [Oic]. 114 x 195 cm. Private  
collection.

**OPP.65:337**; PP.65:105; Z.XXV:105; JL.66\*:272

**Personnages I.** Mougins. 11-April/1965.  
Oil on canvas. [114 x 195] 113 x 194 cm.  
Christie's. #42, 7857, 06/23/10. Formerly  
Sotheby's. #58, 12/07/99.

**OPP.65:068**; PP.65:106; Z.XXV:102;  
ZU.94\*:n/a





**La famille du jardinier II.** Mougins. 11-April/1965. Oil on canvas. 115 x 194,3 cm. B Two Collection.

**OPP.65:204**; PP.65:107; Z.XXV:104; PF.10\*:131

**Homme écrivain et femme nue allongés.** Mougins. 12-April/1965. Oil on canvas [OIC]. 97 x 195 cm. Private collection.

**OPP.65:336**; PP.65:108; Z.XXV:103





**Les dormeurs.** Mougins. 13-April/1965. Oil on canvas. 114 x 195 cm. Galerie Louise Leiris, Paris.

**OPP.65:005**; PP.65:109; Z.XXV:106;  
DQ.74:168p; GB.87:292; GS.83\*:20; HN.00\*:85;  
HN.13:308p; TG.88\*:32; TO.99\*:183;  
UP.00:1092; WS.93\*:160; WW.91:634p

---

**Buste d'homme II.** Mougins. 14-April/1965. Oil on canvas. 81 x 65 cm. Charlotte Jackson Fine Art, Santa Fe. Formerly Christie's. #44C, 12069, 05/12/16; Christie's. #145, 7243, 06/20/06.

**OPP.65:092**; PP.65:111; Z.XXV:111





**Homme écrivant et femme nue allongés.**

Mougins. 14-April/1965. Oil on canvas [OïC]. 97 x 195 cm. Private collection.

**OPP.65:339**; PP.65:110; Z.XXV:110

---

**Homme et femme nus.** Mougins. 15-April/1965. Oil on canvas. [114 x 195] 113,7 x 194,6 cm. Helly Nahmad Collection, Monaco/London. Formerly Christie's. #548, 9224, 11/09/99.

**OPP.65:196**; PP.65:112; Z.XXV:107; CB.11\*:194p; FM.00:25p; HN.13\*:315p; JL.66\*:274; JL.66\*:274; PJ.14\*:211p







**Têtes d'homme et de femme II.** Mougins. 15-April/1965. Oil & Ripolin on canvas. [54 x 81] 54 x 80,6 cm. Sotheby's. #144, N11137, 11/14/22. Formerly Sotheby's. #50, 11/18/86.

**OPP.65:338**; PP.65:113; Z.XXV:109

---

**La pisseseuse I.** Mougins. 16-April/1965. Oil on canvas. 194,8 x 96,5 cm. Musée National d'Art Moderne, Centre Georges Pompidou, Paris. (Inv AM.1984-641). Donation Louise et Michel Leiris, 1984.

**OPP.65:082**; PP.65:114; Z.XXV:108; AH.88:66; BA.22\*:229p; BM.05:69p; BP.21:94p; DU.95\*:100p; DW.05:95p; GS.83\*:21; HN.13:306p; JB.08:51p; JC.01a\*:226; JF.96:185p; NM.95:354p; PD.09:444p; PL.03:27; TG.88\*:33; UP.00:1089; VO.16:129p; WW.91:631p





**Le guitariste.** Mougins. 17-April~1-May/1965. Oil on canvas. 195 x 97 cm. Dallas Museum of Art. (Inv 1987.371). The Art Museum League Fund.

**OPP.65:076**; PP.65:123; Z.XXV:112; WS.07\*:77

---

**Femme nue allongée.** Mougins. 18-April/1965. Oil on canvas. 114 x 195 cm. Museum am Ostwall, Dortmund.

**OPP.65:113**; PP.65:115; Z.XXV:114; BG.05\*:39p; CC.01\*:25p; MD.02\*:354p





**Femme nue couchée.** Mougins. 19-April/1965. Oil, black wax crayon & pencil on panel. 34 x 86 cm. Christie's. #227, 17155, 05/14/19.

**OPP.65:295**; PP.65:117; Z.XXV:117

---

**Mangeurs de pastèque I.** Mougins. 19-April/1965. Oil on canvas [OïC]. 97 x 195 cm. Private collection.

**OPP.65:340**; PP.65:116; Z.XXV:113





**Coq et mangeurs de pastèque II.** Mougins. 19-April/1965. Oil on canvas [OiC]. 114 x 195 cm. Private collection.

**OPP.65:344**; PP.65:118; Z.XXV:120; JL.66\*:276

---

**Homme et femme nue couchée.**

Mougins. 22-April/1965. Pencil on board. 20,7 x 26,8 cm. Sotheby's. #223, L15004, 02/04/15.

**OPP.65:254**; PP.65:119; Z.XXV:116





**Guitariste.** Mougins. 22-April/1965. Oil on canvas [Oic]. 195 x 97 cm. Private collection.

**OPP.65:343**; PP.65:120; Z.XXV:119

**Visage (Pour mon ami Nesjar).**  
Mougins. 26-April/1965. Felt-tip pen on paper; a frontispiece. 32 x 48,6 cm. Sotheby's. 10/13/22.

**OPP.65:388**





**Étude pour une sculpture.** Mougins. 30-April/1965. Pencil [Reverse of *Étude pour une sculpture*]. 50 x 11,3 cm. William E. Hartmann Collection.

**OPP.65:191**; PP.65:122; Z.XXV:173; CH.68a\*:104

---

**Étude pour une sculpture.** Mougins. 30-April/1965. Pencil on paper [Obverse of *Étude pour une sculpture*]. 50 x 11,3 cm. Private collection.

**OPP.65:363**; PP.65:121; Z.XXV:170

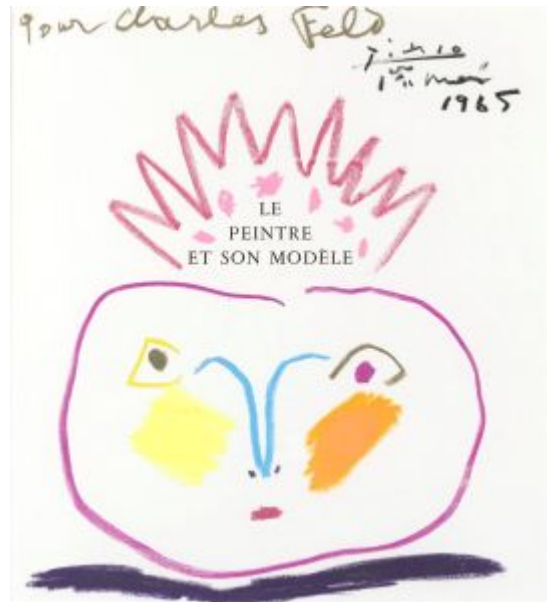






**Shakespeare.** Mougins. 1-May/1965. Pastel on lithograph. 46 x 30 cm. Rouillac. #585, 05/15/95.

**OPP.65:255**



**Tête ronde (Pour Charles Feld).** Mougins. 1-May/1965. Pastel on cover of book *Le Peintre et son modèle*. [29 x 26] 30,1 x 27,4 cm. Hélène Bailly Gallery. 2018. Formerly Sotheby's. #118, PF1760, 11/21-22/17; Rouillac. #527, 05/15/95. Charles Feld Collection.

**OPP.65:256**



**Tête d'homme.** Mougins. 1-May/1965. Color pencil [OIC]. 29,8 x 27,3 cm. Private collection. Formerly Sotheby's. #63, 02/19/97.

**OPP.65:391**; PP.65:124

**Buste de femme I.** Mougins. 3-May/1965. Oil on canvas [OIC]. 92 x 73 cm. Private collection.

**OPP.65:342**; PP.65:125; Z.XXV:118





**Paysage II.** Mougins. 4-May/1965. Oil & Ripolin on canvas. [130 x 162] 128,3 x 162 cm. Sotheby's. #10, N11332, 05/16/23. Formerly Mo Ostin Collection.

**OPP.65:230**; PP.65:126; Z.XXV:123; UW.93:38a

**Paysage.** Mougins. 4-May/1965. Oil on canvas [OiC]. 97 x 195 cm. Private collection.

**OPP.65:347**; PP.65:127; Z.XXV:124





**Paysage de Mougins II.** Mougins. 5-May/1965. Oil on canvas. [195] 194,6 x 97 cm. Pinakothek der Moderne, München.

**OPP.65:150**; PP.65:129; BS.81\*:15; CT.23\*:45; TO.99\*:185

---

**L'estérel III.** Mougins. 5-May/1965. Oil on canvas. 54 x 81 cm. Sprengel Museum, Hannover.

**OPP.65:272**; PP.65:130; Z.XXV:122; BS.81\*:16; LC.66\*:15; MS.24\*:25





**Paysage.** Mougins. 5-May/1965. Oil on canvas [OiC]. 114 x 195 cm. Private collection.

**OPP.65:345**; PP.65:128; Z.XXV:121

---

**Paysage de Mougins II.** Mougins. 7-May/1965. Oil on cardboard. 50 x 80,3 [80] cm. Private collection. Courtesy Prince & Wooster LLC. Formerly Christie's. #70, 2594, 11/07/12; Sotheby's. #412, N08486, 11/05/08; Galerie Beyeler, Basel.

**OPP.65:079**; PP.65:132; Z.XXV:126; BS.67a\*:61; CT.23\*:46; KG.71:63; KG.85:63; SO.74\*:n/a; WW.91:634p







**Paysage de Mougins.** Mougins. 7-May/1965. Oil on canvas [OIC]. 65 x 100 cm. Perls Galleries, New York.

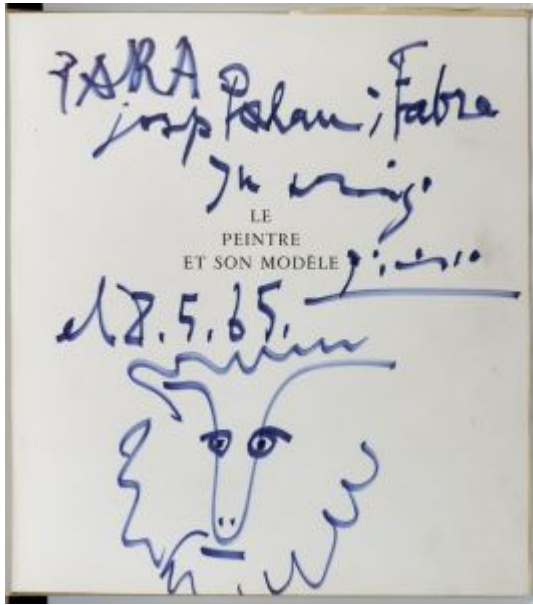
**OPP.65:198**; PP.65:131; Z.XXV:125; EG.66\*:46p

**Petite visage de faune (Para Josep Palau i Fabre).** Mougins. 8-May/1965. Ballpoint pen & felt-tip pen on paper. 16,8 x 12,1 cm. Fundació Palau, Caldes d'Estrac. (Inv 0000287).

**OPP.65:154**







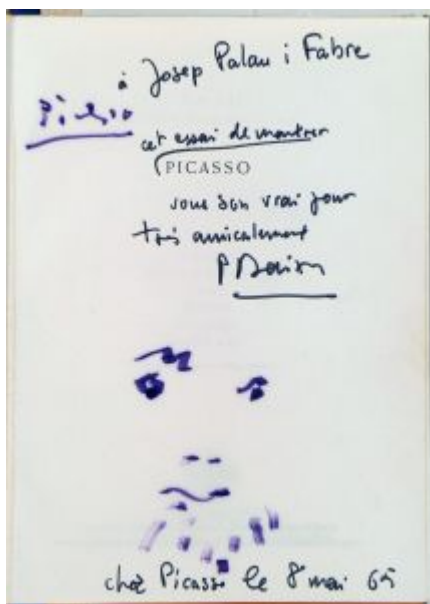
**Dédicace et esquisse (Para Josep Palau i Fabre).** Mougins. 8-May/1965. Blue felt-tip pen on paper. 30,1 x 27,7 cm. Fundació Palau, Caldes d'Estrac. (Inv 0000414).

**OPP.65:155**

**Josep Palau et Picasso à Mougins.** Mougins. 8-May/1965. Photograph. 23,5 x 17 cm. Fundació Palau, Caldes d'Estrac. (Inv 0000612).

**OPP.65:156**





**Dédicace et visage (À Josep Palau i Fabre).** Mougins. 8-May/1965. Blue felt-tip pen on paper. 20,5 x 14,7 cm. Fundació Palau, Caldes d'Estrac. (Inv 0000618).

**OPP.65:157**

**Personnage sur un char.** Mougins. 9-May/1965. Pencil on cardboard. 32,8 x 26,4 cm. Private collection.

**OPP.65:341**; PP.65:133; Z.XXV:115





**Homme et femme à la pastèque II.** Mougins. 13-May/1965. Oil on canvas. 130 x 162 [205] cm. Private collection, Turin.

**OPP.65:105**; PP.65:135; Z.XXV:128

**Mangeuse de pastèque et homme écrivain.** Mougins. 13-May/1965. Oil on canvas. 129,8 x 161,7 cm. Christie's. #21, 2844, 05/06/14.

**OPP.65:244**; PP.65:134; Z.XXV:127; DL.67\*:86; NY.65g\*:n/a





**Homme chauve au tricot rayé (Autoportrait) II.**

Mougins. 15-May/1965. Oil on canvas. 61 x 50 cm. Museo Picasso, Málaga. On temporary loan from Fundación Almine & Bernard Ruiz-Picasso para el Arte.

**OPP.65:186**; PP.65:137; Z.XXV:132; BM.05:256p;  
DP.20\*:183; GA.00\*:86; MA.23a\*:n/a; TB.01\*:19;  
TB.02\*:19

---

**Homme écrivant et femme nue à la pastèque.** Mougins. 15-May/1965. Oil on canvas [OIC]. 89 x 116 cm. Private collection.

**OPP.65:348**; PP.65:136; Z.XXV:129





**Deux hommes nus et enfant assis.** Mougins. 21-May/1965. Oil on canvas. 130 x 162 cm. Christie's. #65, 2045, 11/06/08. Formerly Sotheby's. #59, N08089, 05/03/05.

**OPP.65:065**; PP.65:138; Z.XXV:130

---

**Deux musiciens II.** Mougins. 21-May/1965. Oil on canvas. [88,9 x 116] 89 x 116 cm. Sotheby's. #135, L23006, 06/27/23.

**OPP.65:291**; PP.65:139; Z.XXV:133







**Le danseur (Tête d'histriion)**. Mougins. 23-May/1965. Linoleum cut printed in black & brown on Arches wove, edition 200. 63,5 x 52,7 cm. Sotheby's. #218, N07787, 05/03/02. Also Fundació Palau, Caldes d'Estrac. (Inv 0000597).

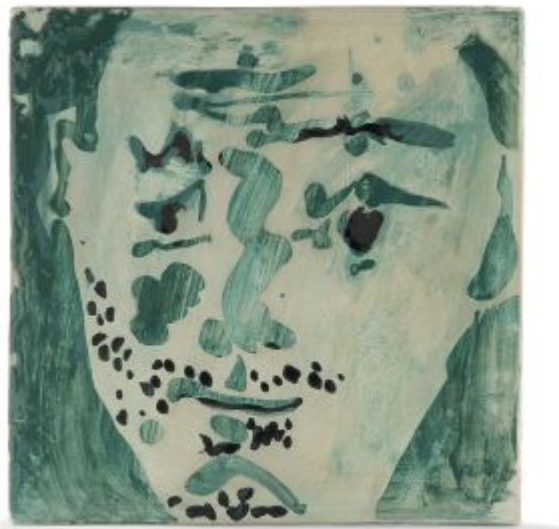
**OPP.65:024**; B.II:1849; Ba:1360; P.P.L:186; LV.05\*:n/a; MA.23a\*:32; MM.11b\*:58

**Tête d'homme**. Vallauris. 24-May/1965. Painted & partially varnished ceramic; square tile. 25,8 x 25,8 cm. Sotheby's. #103, N09727, 05/18/17. Formerly Marina Picasso Collection.

**OPP.65:284**







**Tête d'homme barbu.** Vallauris. 24-May/1965. Terre de faïence, painted & partially glazed. 25,5 x 25,5 cm. Hélène Bailly Gallery. Formerly Espace Tajan. #20, 2121, 03/17/21.

**OPP.65:377**; QU.04\*:77p

**Homme au chapeau.** Mougins. 25-May/1965. Oil on plywood. 100,5 x 81,3 cm. Sotheby's. #51, N08314, 05/08/07.

**OPP.65:096**; PP.65:142; Z.XXV:136; BS.71b\*:n/a





**Tête d'homme II (Maurice Bresnu).** Mougins. 25-May/1965. Oil on canvas. 46 x 38 cm. Sotheby's. #48, N09219, 11/04//14. Formerly Christie's. #32, 7951, 02/09/11.

**OPP.65:153**; PP.65:141; Z.XXV:134

**Tête d'homme aux zigzags rose et vert.** Mougins. 25-May/1965. Oil on canvas. [61 x 50] 60,5 x 49,5 cm. Fundación Almine & Bernard Ruiz-Picasso para el Arte.

**OPP.65:187**; PP.65:140; Z.XXV:131; MA.23a\*:36; TB.01\*:20; TB.02\*:20





**Visage bleu.** Vallauris. 26-May/1965. Painted & partially glazed ceramic; round plate. 25,5 cm. Sotheby's. #142, L15007, 06/25/15.

**OPP.65:261**; HB.85\*:n/a; KU.99\*:78

---

**Visage jaune.** Vallauris. 26-May/1965. Painted & partially glazed ceramic; round plate. 25,5 cm. Sotheby's. #148, L15007, 06/25/15.

**OPP.65:262**; HB.85\*:n/a; KU.99\*:77





**Visage.** Vallauris. 26-May/1865. Painted & glazed ceramic round plate. 25,5 cm. Sotheby's. #529, L16005, 02/05/16. Formerly Marina Picasso Collection.

**OPP.65:265**; BA.03a\*:n/a; HB.85\*:n/a

---

**Visage.** Vallauris. 26-May/1965. Painted and glazed ceramic round plate. 25,4 cm. Sotheby's. #670, L16005, 02/05/16. Formerly Marina Picasso Collection.

**OPP.65:268**; BA.03a\*:n/a; HB.85\*:n/a





**Paysage de Mougins.** Mougins. 27-May/1965. Oil on plywood. [87 x 116,8] 87,9 x 115,5 cm. Sotheby's. #32, N09860, 05/14/18. Formerly Jonathan Lahyani Fine Art, Geneva.

**OPP.65:038**; PP.65:143; Z.XXV:135

---

**Homme au maillot III.** Mougins. 27-May/1965. Oil on canvas. 92 x 72,5 cm. Hammer Galleries. 2018. Formerly Sotheby's. #20, PF1506, 06/03/15.

**OPP.65:260**; PP.65:144; Z.XXV:137; HU.68\*:107







**Nu dans un fauteuil II.** Mougins. 27-May/1965. Oil on plywood [OïC]. 116 x 89 cm. Private collection.

**OPP.65:349**; PP.65:145; Z.XXV:139

---

**Figure.** Mougins. 28-May/1965. Wool carpet. 252 x 141,3 cm. Christie's. #227, 22702, 04/10/24.

**OPP.65:399**







**Visage.** Vallauris. 30-May/1965. White clay plate, decoration with engobe, partially enamelled. 25 cm. Private collection.

**OPP.65:087**; WW.91:601p



**Femme au chapeau rouge.** Mougins. 30-May/1965. Oil on canvas. [92 x 73] 92,5 x 72,5 cm. Fundación Almine & Bernard Ruiz-Picasso para el Arte.

**OPP.65:188**; PP.65:146; Z.XXV:138; MA.23a\*:16; MG.18\*:93p; TB.01\*:21; TB.02\*:21



**Nu dans un fauteuil II.** Mougins. 30-May/1965. Oil on canvas [OIC]. [116] 115,6 x 89 cm. Mr. and Mrs. Samuel M. Kootz Collection, New York.

**OPP.65:199**; PP.65:147; Z.XXV:140; EG.66\*:52p



**Nu au chapeau assis dans un fauteuil III.** Mougins. 30-May/1965. Oil on canvas. 116 x 89 cm. Mr. and Mrs. Samuel M. Kootz Collection, New York.

**OPP.65:200**; PP.65:148; Z.XXV:141; EG.66\*:53p



**Nu au chapeau, buste (Jacqueline)**. Mougins. 31-May/1965. Oil on canvas. [92,2 x 73,2] 92 x 73 cm. Sotheby's. #24, N10067, 05/14/19. Formerly Christie's. #71, 2045, 11/06/08.

**OPP.65:121**; PP.65:149; Z.XXV:142



**Femme au grand chapeau: buste II (Jacqueline)**. Mougins. 31-May/1965. Oil on canvas. 92 x 73 cm. Sotheby's. #19, N08633, 05/05/10. Formerly Patricia Kennedy Lawford Collection.

**OPP.65:147**; PP.65:150; Z.XXV:143



**Tête de femme I.** Mougins. 1-June/1965. Oil on canvas. 50 x 48,5 cm. Private collection, Madrid. Formerly Andy Warhol Collection.

**OPP.65:217**; PP.65:151; Z.XXV:144; FC.00\*:111

**Tête de femme au chapeau II.** Mougins. 1-June/1965. Oil on canvas. 60 x 50 cm. Guardian Art Centre. #2046, N/A, 11/19/21. Formerly Christie's. #34, 2788, 11/05/13.

**OPP.65:236**; PP.65:152; Z.XXV:148; VO.16\*:148p





**Tête d'homme III.** Mougins. 1-June/1965. Oil on canvas [OïC]. 55 x 46 cm. Private collection.

**OPP.65:350**; PP.65:153; Z.XXV:145



**Tête d'homme IV.** Mougins. 1-June/1965. Oil on canvas [OïC]. 55 x 46 cm. Private collection.

**OPP.65:351**; PP.65:154; Z.XXV:146





**Picasso et le théâtre, Toulouse, Musée des Augustins, juin-septembre 1965.** Mougins. June~September/1965. Poster [After *Le danseur (Tête d'histrion)*]. 90,4 x 58 cm. Musée Picasso, Paris. (Inv 012/00747).

**OPP.65:287**



**Tête de femme I (Jacqueline).** Mougins. 2-June/1965. Oil on canvas. [55 x 46] 55,2 x 47 cm. Sotheby's. #12, PF2216, 10/25/22. Formerly Sotheby's. #307, N08090, 05/04/05; Claude Ruiz-Picasso Collection.

**OPP.65:064**; PP.65:155; Z.XXV:147





**Tête d'homme de profil II.** Mougins. 2-June/1965. Oil on canvas. [65 x 54] 65,1 x 54,2 cm. Christie's. #15, 21069, 10/20/22.

**OPP.65:352**; PP.65:156; Z.XXV:149; NY.71b\*:97

---

**Tête d'homme barbu III.** Mougins. 2-June/1965. Oil on canvas [OïC]. 81 x 65 cm. Private collection.

**OPP.65:353**; PP.65:157; Z.XXV:150





**Tête d'homme à la pipe.** Mougins. 3-June/1965. Oil on canvas. 92 x 73 cm. Helly Nahmad Collection, Monaco/London. Formerly Sotheby's. #65, N08789, 11/02/11.

**OPP.65:180**; PP.65:158; Z.XXV:151; HN.13\*:367p



**Tête d'homme III.** Mougins. 3-June/1965. Oil on canvas [OIC]. 61 x 50 cm. Private collection.

**OPP.65:354**; PP.65:159; Z.XXV:152



**Tête d'homme barbu (Maurice Bresnu)**. Mougins. 5-June/1965. Oil on canvas. 46 x 38,1 cm. Hammer Galleries. 2011. Formerly Christie's. #0492, 7405, 06/19/07; Christie's. #604, 05/14/99.

**OPP.65:097**; PP.65:161; Z.XXV:154; NY.11d\*:n/a

**Tête d'homme barbu**. Mougins. 5-June/1965. Oil on canvas. 46 x 38 cm. Sotheby's. #24, L09601, 02/03/09.

**OPP.65:125**; PP.65:162; Z.XXV:155





**Tête d'homme I.** Mougins. 5-June/1965. Oil on canvas [Oic]. 55 x 46 cm. Private collection.

**OPP.65:355**; PP.65:160; Z.XXV:153

**Joueur de flûte et mangeur de pastèque I.**  
Mougins. 6-June/1965. Oil on canvas. 160 x 130 cm.  
Christie's. #50, 19872, 10/06/20.

**OPP.65:078**; PP.65:163; Z.XXV:158; BF.16\*:n/a;  
BF.17\*:n/a; DH.19\*:n/a; GV.12\*:n/a; LA.98\*:n/a;  
LO.87a\*:16; PA.74a\*:663; WW.91:635p





**Tête d'homme barbu III.** Mougins. 6-June/1965. Oil on canvas. 73 x 60 cm. Opera Gallery. 2006. Formerly Christie's. #146, 7243, 06/20/06; Christie's. #68, 05/15/90.

**OPP.65:091**; PP.65:165; Z.XXV:156; CU.67\*:n/a; JL.66\*:279

---

**Buste de femme II.** Mougins. 6-June/1965. Oil on canvas. 100,7 x 80,6 cm. Private collection, Germany. Formerly Christie's. #349, 9066, 11/19/98.

**OPP.65:112**; PP.65:164; Z.XXV:157; BB.68\*:80; BG.05\*:38p; LP.99:243p; MD.02\*:351p; ST.88\*:93







**Pied.** Mougins. 7-June/1965. Oil on canvas [OIC].  
54 x 65 cm. Private collection.

**OPP.65:356**; PP.65:166; Z.XXV:159

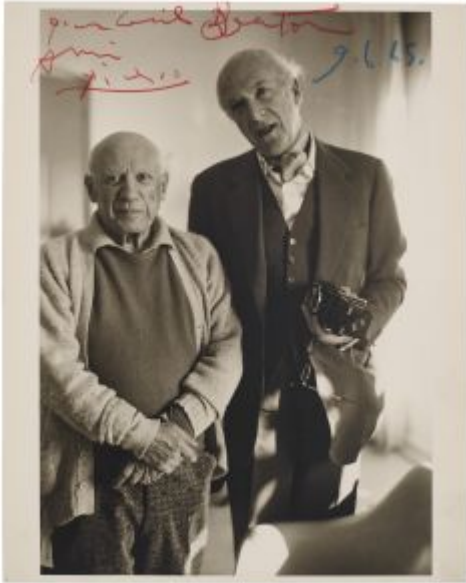
---

**Dédicace (Pour Cecil Beaton).** Mougins. 9-  
June/1965. Red and blue crayon on gelatin silver print.  
29,7 x 23,5 cm. Bonhams. #54, 27761, 05/18/22.

**OPP.65:387**







**Dédicace (Pour Cecil Beaton)**. Mougins. 9-June/1965. Red & blue ink on photograph. 28,5 x 19,6 cm. Christie's. #41A, 22887, 09/19-10/03/23.

**OPP.65:394**

---

**Tête d'homme I**. Mougins. 12-June/1965. Oil on canvas [OïC]. 55 x 46 cm. Private collection.

**OPP.65:357**; PP.65:167; Z.XXV:160





**Tête d'homme II.** Mougins. 12-June/1965. Oil on canvas [OIC]. 55 x 46 cm. Private collection.

**OPP.65:358**; PP.65:168; Z.XXV:161; GS.83\*:22



**Tête d'homme III.** Mougins. 12-June/1965. Oil on canvas [OIC]. 65 x 54 cm. Private collection.

**OPP.65:359**; PP.65:169; Z.XXV:162



**Visage bleu.** Vallauris. 21-June/1965. Terracotta, painted in engobes & oxides on satined surface. 42,5 cm. Private collection.

**OPP.65:274**; CE.04\*:238

**Assiette décorée d'un visage.** Vallauris. 21-June/1965. White earthenware, thrown, press-moulded, painted with slips & enamel. 41,9 x 3,5 cm. Fundación Almine & Bernard Ruiz-Picasso para el Arte.

**OPP.65:398**; MA.23a\*:29





**Tête d'homme III.** Mougins. 23-June/1965. Oil on canvas. [45,7 x 38,1] [46 x 38] 46,4 x 38] cm. Sotheby's. #193, N09498, 05/10/16. Formerly Helly Nahmad Collection, Monaco/London; Galería Leandro Navarro. 2013.

**OPP.65:229**; PP.65:173; Z.XXV:165; HK.13\*:n/a; HN.13\*:371p



**Tête d'homme I.** Mougins. 23-June/1965. Oil on canvas. 72,8 x 59,7 cm. Sotheby's. #21, PF1416, 12/04/14.

**OPP.65:253**; PP.65:171; Z.XXV:163





**Tête d'homme II.** Mougins. 23-June/1965. Oil on canvas [Oic]. 46 x 38 cm. Private collection.

**OPP.65:360**; PP.65:172; Z.XXV:164

---

**Tête d'homme.** Vallauris. 24-June/1965. Ceramic tile, painted & enameled. 25,7 x 25,7 x 2,2 cm. Sotheby's. #27, HK0778A, 03/16-31/18. Formerly Omer Tiroche Collection; Marina Picasso Collection. (Inv 59149).

**OPP.65:101**; BA.03a\*:292





**Carreau visage d'homme.** Vallauris. 24-June/1965. Ceramic tile, painted & enameled. 25,8 x 25,8 x 2,2 cm. Sotheby's. #344, L20004, 02/05/20. Formerly Marina Picasso Collection. (Inv 59156).

**OPP.65:102**; BA.03a\*:293

**Buste d'homme.** Vallauris. 24-June/1965. Two ceramic tiles, painted & enameled. 51 x 25,5 cm. Sotheby's. #141, L15007, 06/25/15. Formerly Marina Picasso Collection. (Inv 59157, Inv 59176). Courtesy Galerie Jan Krugier, Geneva.

**OPP.65:103**; BA.03a\*:294; BA.03a\*:295







**Tête d'homme.** Vallauris. 24-June/1965. Painted & partially glazed ceramic; square tile. 25,5 x 25,5 cm. Sotheby's. #193, L15007, 06/25/15.

**OPP.65:263**; KU.99\*:80; VC.98\*:56

---

**Tête d'homme.** Vallauris. 24-June/1965. Painted & glazed ceramic square tile. 25,6 x 25,6 cm. Sotheby's. #649, L16005, 02/05/16. Formerly Marina Picasso Collection.

**OPP.65:267**





**Tête d'homme.** Vallauris. 24-June/1965. Painted & glazed ceramic; square tile. 25,8 x 25,8 cm. Sotheby's. #104, N09727, 05/18/17. Formerly Marina Picasso Collection.

**OPP.65:283**; KU.99\*:80; VC.98\*:53

---

**Buste d'homme.** Mougins. 30-June/1965. Pencil on canvas. 130 x 97 cm. Private collection.

**OPP.65:361**; PP.65:174; Z.XXV:253





**Télégramme des 'Picasso' à François Hugo.** Mougins. 7-July/1965. Telegram. S/U. Collection Ateliers Hugo.

**OPP.65:397**; CG.23:27p

**Tête d'homme (Pour Bill).** Mougins. 15-July/1965. Felt-tip pen with black ink & red, yellow & blue vegetable pigments [OIC]. 26,5 x 21 cm. William E. Hartmann Collection.

**OPP.65:233**; PP.65:175; Z.XXV:166; CH.68a\*:105





**Visage.** Mougins. 18-July/1965. Colored felt-tip pen on paper. 26 x 20,4 cm. Private collection. Formerly Christie's. #346, 8232, 12/07/98.

---

**OPP.65:194**

**Tête.** Mougins. 19-July/1965. Ink on paper. S/U. Private collection.

---

**OPP.65:197**



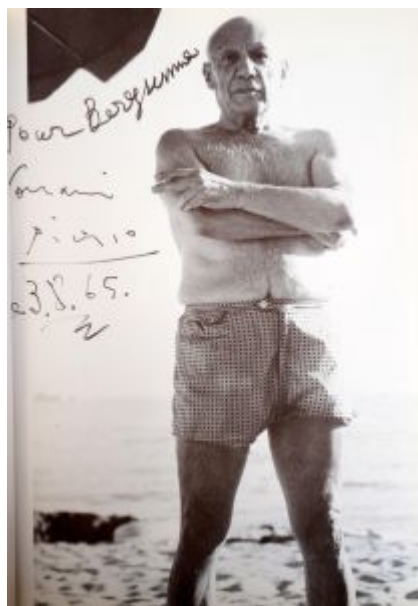


**Faune.** Mougins. 20-July/1965. Felt-tip pen [OIC]. 20 x 13 cm.  
Private collection. Formerly Sotheby's. #68, 03/20/91.

**OPP.65:392**; PP.65:178

**Dédicace (Pour Berggruen).** Mougins. 3-August/1965.  
Ink on photograph. S/U. Nationalgalerie, Museum  
Berggruen, Staatlichen Museen zu Berlin.

**OPP.65:380**



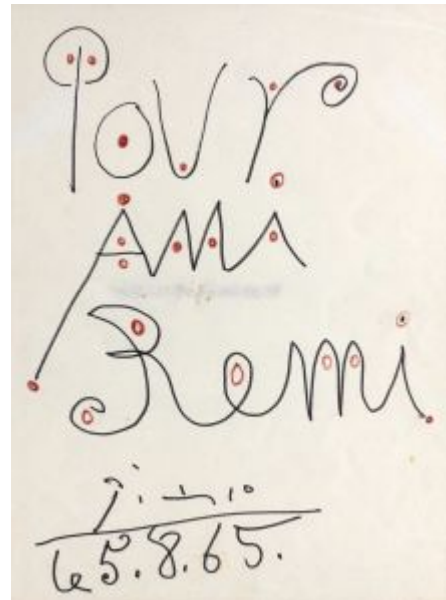


**Tête de picador (Pour M. Brun).** Mougins. 5-August/1965.  
Sepia ink on paper. 27 x 21 cm. Cartel Fine Art, Málaga. 2011.

**OPP.65:182**

**Dédicace (Pour ami Remi).** Mougins. 5-August/1965.  
Felt-tip pen on paper. 27,2 x 19,9 cm. Artcurial. #7, 3164,  
04/05/17.

**OPP.65:281**







**Le soleil (Pour Monsieur René).** Mougins. 5-August/1965. Color crayons on Arches paper. 38 x 28,5 cm. Christie's. #148, 15909, 10/18/18. Formerly Fromkin Fine Art, Jerusalem. 2018.

**OPP.65:290**

**Portrait à la tache jaune.** Mougins. 18-August/1965. Color crayons. 44,5 x 30 cm. Private collection.

**OPP.65:277; CE.04\*:103**





**Tête d'homme barbu.** Mougins. 19-August/1965. Ink & vegetable ink wash on paper. 22,2 x 7,6 cm. Sotheby's. #756, N11160, 10/04/23. Formerly Sotheby's. #76, N09122, 05/30/14. Christie's. #171B, 10/05/89.

**OPP.65:247**; PP.65:179; Z.XXV:167

**Dédicace (Maurice Raynal, Picasso).**  
Mougins. 1-September/1965. Blue ballpoint pen on paper. 17,5 x 15,9 cm. Fundació Palau, Caldes d'Estrac.

**OPP.65:142**





**Portrait de femme de profil (Jacqueline).** Mougins. 12-September/1965. Linoleum cut with India ink. 64,1 x 53,3 cm. Freeman's. #7, 05/15/11.

**OPP.65:162;** Ba:1361; BB.83\*:183; FE.87\*:166



**Portrait de femme de profil (Jacqueline).** Mougins. 12-September/1965. Linoleum cut with India ink. 75 x 62 cm. Museum Würth, Künzelsau. (Inv 2954).

**OPP.65:212;** RD.08\*:137p



**Portrait de femme de profil (Jacqueline).** Mougins. 12-September/1965. Linoleum cut for *Portrait de femme de profil (Jacqueline)*. 64 x 53 cm. Museum Ludwig, Köln. (Inv ML/G 2001/121). Schenkung 2001.

**OPP.65:346**

---

**Portrait de femme de profil (Jacqueline).** Mougins. 12-September/1965. Linoleum cut. 74,5 x 62,5 cm. Museum Ludwig, Köln. (Inv ML/G 2001/123). Schenkung 2001.

**OPP.65:368**





**Portrait de femme de profil (Jacqueline).** Mougins. 12-September/1965. Linoleum cut. 74,5 x 62,5 cm. Museum Ludwig, Köln. (Inv ML/G 2001/124). Schenkung 2001.

**OPP.65:369**

**Portrait de femme de profil (Jacqueline).** Mougins. 12-September/1965. Linoleum cut. 74,5 x 61,5 cm. Museum Ludwig, Köln. (Inv ML/G 2001/125). Schenkung 2001.

**OPP.65:370**





**Portrait de femme de profil (Jacqueline).** Mougins. 12-September/1965. Linoleum cut. 74,5 x 62,5 cm. Museum Ludwig, Köln. (Inv ML/G 2001/122). Schenkung 2001.

**OPP.65:371**

---

**Signature.** Mougins. 15-September/1965. Ink on photograph. S/U. Private collection.

**OPP.65:177**







**Tête d'homme.** Mougins. 19-September/1965. Color pencils on paper [OïC]. 30 x 26,5 cm. Private collection.

**OPP.65:362**; PP.65:180; Z.XXV:169

**Portrait de femme aux ongles rouges XI.** Nîmes. 24-September/1965. Pencil & colored crayon on paper. 27 x 21 cm. Sotheby's. #340, N07991, 05/06/04. Formerly Christie's. #441, 9036, 11/19/98; Maurice and Jacqueline Bresnu (Nounours) Collection.

**OPP.65:045**; GD.96:47p; MI.96\*:n/a; SO.97\*:n/a; VI.98\*:n/a





**Tête de jeune fille au chapeau XII.** Nîmes. 24-September 1964. Pencil & colored crayon on paper. 27 x 21 cm. Sotheby's. #349, N07991, 05/06/04. Formerly Christie's. #443, 9036, 11/19/98; Maurice and Jacqueline Bresnu (Nounours) Collection.

**OPP.65:046**; GD.96:48p; MI.96\*:n/a; SO.97\*:n/a; VI.98\*:n/a

**Tête de femme XV.** Nîmes. 24-September/1965. Pencil on paper. 27 x 21 cm. Sotheby's. #341, N07991, 05/06/04. Formerly Christie's. #445, 9036, 11/19/98; Maurice and Jacqueline Bresnu (Nounours) Collection.

**OPP.65:049**; GD.96:51p; MI.96\*:n/a; SO.97\*:n/a; VI.98\*:n/a





**Tête de femme VI.** Nîmes. 24-September/1965. Colored wax crayons & pencil on paper mounted on board. 27 x 21 cm. Private collection, Germany. Formerly Christie's. #436, 9036, 11/19/98.

**OPP.65:145**; GD.96:42p; MD.02\*:350p; RD.00\*:142; RD.08\*:139p; RD.11\*:46

**Cheval et picador I.** Nîmes. 24-September/1965. Color pencils & graphite pencil on paper mounted on board. 27 x 21 cm. Private collection. Formerly Christie's. #431, 9036, 11/19/98.

**OPP.65:163**; GD.96:37p





**Cheval et picador II.** Nîmes. 24-September/1865. Color wax crayons & pencil on paper mounted on board. 27 x 21 cm. Private collection. Formerly Christie's. #432, 9036, 11/19/98.

**OPP.65:164**; GD.96:38p

**Cheval et picador III.** Nîmes. 24-September/1965. Color wax crayons & pencil on paper mounted on board. 27 x 21 cm. Private collection. Formerly Christie's. #433, 9036, 11/19/98.

**OPP.65:165**; GD.96:39p





**Tête d'homme V.** Nîmes. 24-September/1965. Pencil on paper mounted on board. 27 x 21 cm. Private collection. Formerly Christie's. #435, 9036, 11/19/98.

**OPP.65:167**; GD.96:41p

---

**Femme assise au chapeau VII.** Nîmes. 24-September/1965. Pencil on paper mounted on board. 27 x 21 cm. Private collection. Formerly Christie's. #437, 9036, 11/19/98.

**OPP.65:168**; GD.96:43p







**Tête de femme de profil VIII.** Nîmes. 24-September/1965. Pencil on paper mounted on board. 27 x 21 cm. Private collection. Formerly Christie's. #438, 9036, 11/19/98.

**OPP.65:169**; GD.96:44p

**Tête de femme et profil de jeune homme X.** Nîmes. 24-September/1965. Pencil on paper mounted on board. 27 x 21 cm. Private collection. Formerly Christie's. #440, 9036, 11/19/98.

**OPP.65:170**; GD.96:46p







**Tête de femme au chapeau XIII.** Nîmes. 24-September/1965. Color wax crayons & pencil on paper. 27 x 21 cm. Private collection. Formerly Christie's. #442, 9036, 11/19/98.

**OPP.65:171**; GD.96:49p

**Portrait de femme XIV.** Nîmes. 24-September/1965. Pencil on paper mounted on board. 27 x 21 cm. Private collection. Formerly Christie's. #444, 9036, 11/19/98.

**OPP.65:172**; GD.96:50p



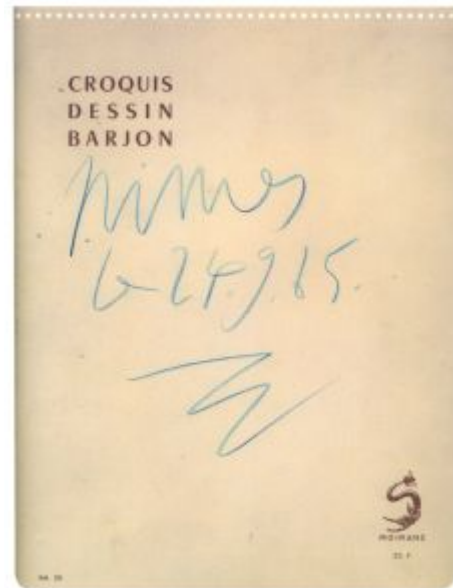


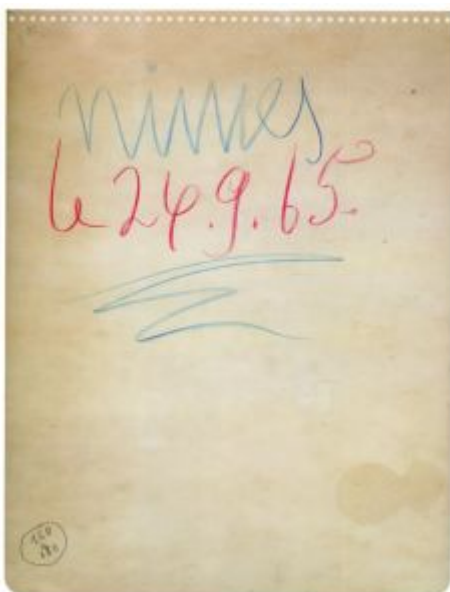
**Tête de femme au chagrin IX.** Nîmes. 24-September/1965. Pencil on paper mounted on board. 27 x 21 cm. Christie's. #439, 9036, 11/19/98.

**OPP.65:383**; GD.96:45p

**Couverture.** Nîmes. 24-September/1965. Green crayon on cardboard. 27 x 21 cm. Private collection.

**OPP.65:395**; GD.96:35p



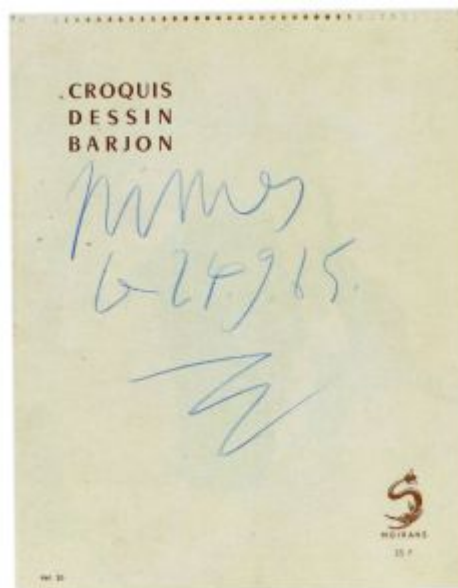


**Couverture.** Nimes. 24-September/1965. Color crayons on cardboard. 27 x 21 cm. Private collection.

**OPP.65:396;** GD.96:58p

**Croquis Dessin Barjon.** Nimes. 24~25-September/1965. Blue crayon on paper. 27 x 21 cm. Christie's. Christie's. #N/A, 9036, 11/19/98.

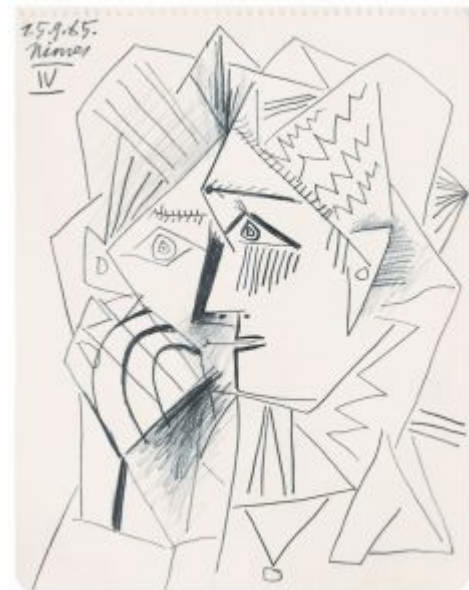
**OPP.65:382;** GD.96:35p





**Tête d'homme IV.** Nîmes. 24-September/1965. Black & colored wax crayons & pencil on paper mounted on board. 27 x 21 cm. Private collection. Formerly Christie's. #434, 9036, 11/19/98.

**OPP.65:166**; GD.96:40p



**Tête de femme IV.** Mougins. 25-September/1965. Pencil on paper. 27 x 21 cm. Simon Capstick-Dale Fine Art. 2014. Formerly Sotheby's. #343, N07991, 05/06/04; Christie's. #449, 9036, 11/19/98; Maurice and Jacqueline Bresnu (Nounours) Collection.

**OPP.65:044**; GD.96:55p; MI.96\*:n/a; SO.97\*:n/a; VI.98\*:n/a



**Tête de femme I.** Nîmes. 25-September/1965. Pencil on paper. 27 x 21 cm. Simon Capstick-Dale Fine Art. 2014. Formerly Sotheby's. #352, N07991, 05/06/04; Christie's. #446, 9036, 11/19/98; Maurice and Jacqueline Bresnu (Nounours) Collection.

**OPP.65:047**; GD.96:52p; MI.96\*:n/a; SO.97\*:n/a; VI.98\*:n/a



**Tête de femme VII.** Nîmes. 25-September/1965. Pencil on paper. [27] 26,6 x 21 cm. Christie's. #201, 2438, 05/05/11. Formerly Sotheby's. #350, N07991, 05/06/04; Christie's. #451, 9036, 11/19/98; Maurice and Jacqueline Bresnu (Nounours) Collection.

**OPP.65:048**; GD.96:57p; MI.96\*:n/a; SO.97\*:n/a; VI.98\*:n/a



**Tête de femme II.** Nîmes. 25-September/1965. Pencil on paper mounted on board. 27 x 21 cm. Christie's. #238, 2312, 05/05/10. Formerly Christie's. #447, 9036, 11/19/98.

**OPP.65:146**; GD.96:53p

---

**Tête de femme III.** Nîmes. 25-September/1965. Pencil on paper mounted on board. 27 x 21 cm. Private collection. Formerly Christie's. #448, 9036, 11/19/98.

**OPP.65:174**; GD.96:54p







**Tête de femme V.** Nimes. 25-September/1965. Pencil on paper mounted on board. 27 x 21 cm. Private collection. Formerly Christie's. #450, 9036, 11/19/98.

**OPP.65:175**; GD.96:56p

**Tête d'homme barbu III.** Mougins. 11-October/1965. [Wash & aquatint] watercolor & ink wash on paper. 64 x 50,3 [50,5] cm. Sotheby's. #312, N07936, 11/06/03.

**OPP.65:041**; PP.65:183; Z.XXV:178





**Tête d'homme barbu II.** Mougins. 11-October/1965. [Wash & aquatint] watercolor, ink wash & charcoal on paper. [64 x 50,5] 63,5 x 49,5 cm. Sotheby's. #539, N08241, 11/08/06.

**OPP.65:053**; PP.65:182; Z.XXV:181; PA.04e\*:n/a

---

**Tête d'homme I.** Mougins. 11-October/1965. Wash. 64 x 50,5 cm. Private collection.

**OPP.65:364**; PP.65:181; Z.XXV:177





**Portrait de femme II.** Mougins. 21-October/1965. Oil on canvas. 73 x 60 cm. Private collection.

**OPP.65:189**; PP.65:185; Z.XXV:184; TB.01\*:22; TB.02\*:22

---

**Tête d'homme.** Mougins. 21-October/1965. Oil on canvas. 81 x 65 cm. Catherine Hutin-Blay Collection, Paris. Formerly Jacqueline Roque Picasso Collection.

**OPP.65:365**; PP.65:184; Z.XXV:180





**Buste de femme.** Mougins. 24-October/1965. Oil on canvas [Oic]. 73 x 60 cm. Private collection.

**OPP.65:366**; PP.65:186; Z.XXV:182

---

**Homme, mère et enfant II.** Mougins. 25-October/1965. Oil on canvas. 130 x 96,5 cm. Private collection.

**OPP.65:006**; PP.65:188; Z.XXV:188; HN.00\*:15; MM.85a\*:57; WS.93\*:161





**Homme et femme nus.** Mougins. 25-October/1965. Oil on canvas. 162 x 130 cm. Gilbert de Botton Family Trust, St Moritz, Switzerland. Courtesy Galerie Louise Leiris, Paris.

**OPP.65:085**; PP.65:187; Z.XXV:183; BA.03a\*:380; BG.05\*:41p; DW.05:97p; GS.83\*:23; TG.88\*:34; WS.07\*:62; WS.93\*:164; WW.91:630p

---

**Mère et enfant II.** Mougins. 26-October/1965. Oil on canvas. 65 x 54 cm. Christie's. #19, 3590, 10/23-24/14. Formerly Siegfried & Angela Rosengart Collection.

**OPP.65:161**; PP.65:190; Z.XXV:186; HP.69:13







**Mère et enfant III.** Mougins. 26-October/1965. Oil on canvas. 81 x 65 cm. Galería Daniel Cardani.

**OPP.65:285**; PP.65:191; Z.XXV:187



**Mère et enfant.** Mougins. 26-October/1965. Oil on canvas [OIC]. 81 x 65 cm. Private collection.

**OPP.65:367**; PP.65:189; Z.XXV:185





**Mère et enfant II.** Mougins. 27-October/1965. Oil on canvas. 130 x 97 cm. José Mestre Collection, Barcelona. Formerly Sotheby's. #57, N08239, 11/07/06.

**OPP.65:094**; PP.65:192; Z.XXV:189; LO.71b\*:n/a

---

**Mère et enfant.** Mougins. 27-October/1965. Oil on canvas [OIC]. 116 x 89 cm. Private collection. Formerly Sotheby's. #52, 06/28/94.

**OPP.65:319**; PP.65:193; Z.XXV:190





**Mère et enfant.** Mougins. 28-October/1965. Oil on canvas. 100 x 81 cm. Private collection. Formerly Sotheby's. #93, 11/29/88.

**OPP.65:195**; PP.65:194; Z.XXV:192

---

**Visage d'homme.** Mougins. 30-October/1965. Painted terracotta. 22 cm. Private collection, Switzerland.

**OPP.65:237**; LM.06\*:22



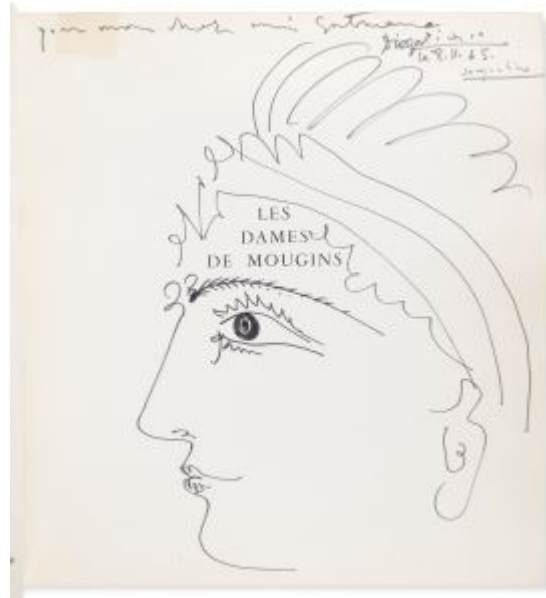


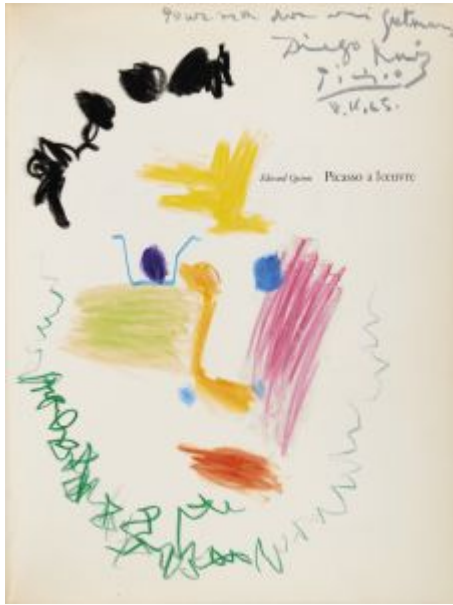
**Personnage de face sur fond bleu.** Mougins. 1-November/1965. Oil on plywood. [48] 47,5 x 40 cm. Private collection.

**OPP.65:104**; PP.65:196; Z.XXV:191; BA.03a\*:379; MR.03\*:167p

**Profil de femme (Pour mon cher ami Gutmann).** Mougins. 8-November/1965. Felt-tip pen on inside of book H el ene Parmelin, Les Dames de Mougins. 30 x 27,5 cm. Christie's. #230, 21072, 11/09-21/22.

**OPP.65:389**





**Tête d'homme barbu (Pour mon cher ami Gutmann).**  
Mougins. 8-November/1965. Felt-tip pen on inside of book  
Edward Quinn, Picasso à l'oeuvre. 33 x 25,3 cm. Christie's.  
#231, 21072, 11/09-21/22.

**OPP.65:390**

**Centaure.** Mougins. 1965. Blown glass  
with pigment. [31 x 10 x 29] 31,2 x 10 x  
29,2 cm. Sotheby's. #506, N08241,  
11/08/06.

**OPP.65:077**; GC.96:278p





**Visage.** Vallauris. 1965. White clay plate, painted & enamelled. 25,5 cm. Marina Picasso Collection. (Inv 59063). Courtesy Galerie Jan Krugier, Geneva.

**OPP.65:099**; BA.03a\*:287

**Visage.** Vallauris. 1965. White clay plate, painted & enamelled. 25,5 cm. Marina Picasso Collection. (Inv 59062). Courtesy Galerie Jan Krugier, Geneva.

**OPP.65:100**; BA.03a\*:290



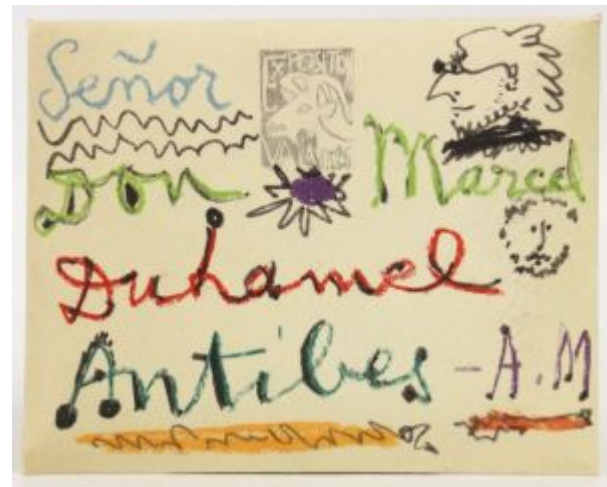


**Le déjeuner sur l'herbe (d'après Manet)..**  
Mougins. 1965. Hand woven wool tapestry [After *Le déjeuner sur l'herbe (d'après Manet)*]. [254 x 306] 248,3 x 299 cm. Sotheby's. #457, N08360, 11/08/07.

**OPP.65:108**

**Picasso de Poche: Le Carnet des Carnets.** Mougins. 1965. Facsimile. S/U. Musée Picasso, Paris.

**OPP.65:126**; AM.08:118p







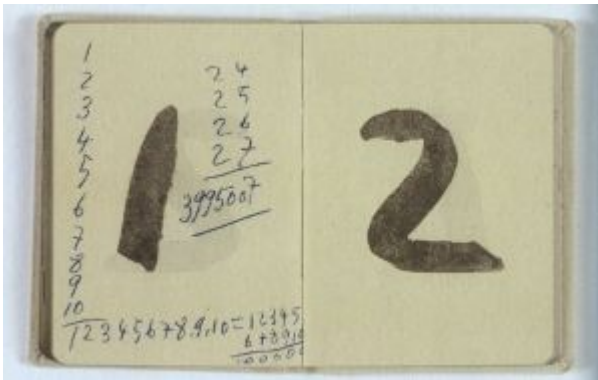
**Picasso de Poche: Le Carnet des Carnets.**  
Mougins. 1965. Facsimile. S/U. Musée Picasso, Paris.

**OPP.65:127**; AM.08:118p

**Picasso de Poche: Le Carnet des Carnets.** Mougins. 1965. Facsimile. S/U. Musée Picasso, Paris.

**OPP.65:129**; AM.08:120p



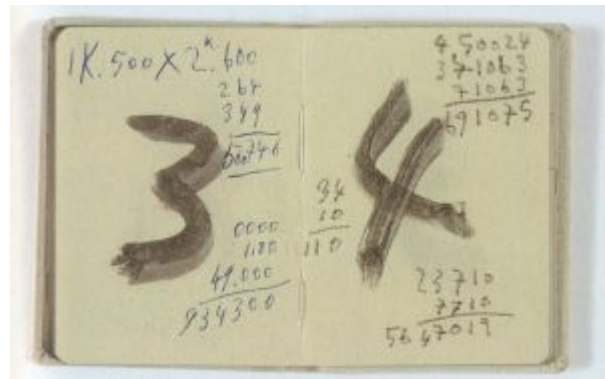


**Picasso de Poche: Le Carnet des Carnets.** Mougins. 1965. Facsimile. S/U. Musée Picasso, Paris.

**OPP.65:130**; AM.08:120p

**Picasso de Poche: Le Carnet des Carnets.** Mougins. 1965. Facsimile. S/U. Musée Picasso, Paris.

**OPP.65:131**; AM.08:121p



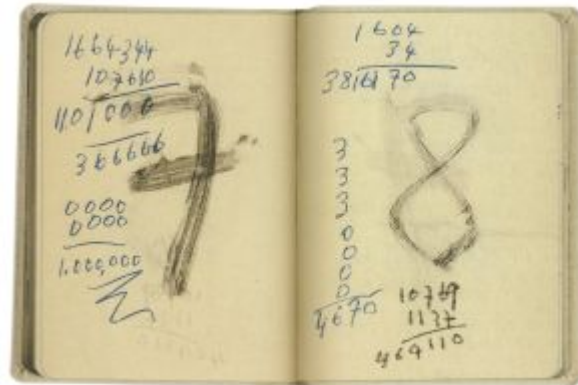


**Picasso de Poche: Le Carnet des Carnets.**  
Mougins. 1965. Facsimile. S/U. Musée Picasso, Paris.

**OPP.65:132**; AM.08:121p

**Picasso de Poche: Le Carnet des Carnets.** Mougins. 1965. Facsimile. S/U. Musée Picasso, Paris.

**OPP.65:133**; MPB:114.014.1c;  
AM.08:122p; PP.19:182-183p





**Picasso de Poche: Le Carnet des Carnets.**  
Mougins. 1965. Facsimile. S/U. Musée Picasso,  
Paris.

**OPP.65:134**; AM.08:122p

---

**Petite tête de profil.** Vallauris. 1965. White clay sculpture,  
edition 50. 30,5 cm. Christie's. #103, 2163, 04/28/09.

**OPP.65:135**; AR:535



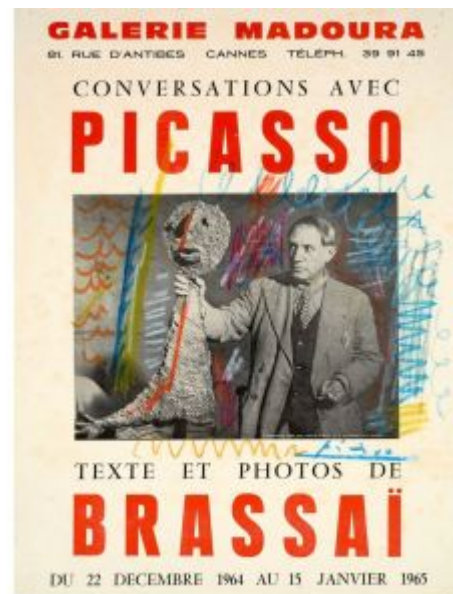


**Vase de fleurs et Profil d'homme.** Mougins. 1965. Oil crayon on paper on inside page, Françoise Gilot et et Carlton Lake, Vivre avec Picasso. 24,1 x 31,3 cm. Christie's. #117, 5563, 05/20/09.

**OPP.65:138**

**Conversations Avec Picasso.** Mougins. 1965. Crayons on poster. 52 x 38 cm. Artcurial. #248, 2162, 05/26-28/12.

**OPP.65:140**





**Amphore burlesque.** Mougins. 1965. Blown glass, paint, dye. 28,9 cm. Art Gallery of Ontario, Toronto. (Inv 72/57). Gift of Walter Carsen, 1972ORG.

**OPP.65:144**

**Tête de femme (Avec Carl Nesjar).** Mougins. 1965. Concrete engraving. 1,500 cm. Kristinehamn, Sweden.

**OPP.65:148;** PP.65:199; WS:651; JL.71:280p;  
PD.69:111p







**Visage (Edward Quinn, Picasso at Work).** Mougins. 1965.  
Ink. 33 x 24,4 cm. Sotheby's. #60, L11402, 06/08/11.

**OPP.65:176**

**Méditerranée.** Mougins. [1965]. Wool  
tapestry [After *Méditerranée*]. 182,9 x  
228,6 cm. Los Angeles Modern Auctions.  
#00118, 12/11/11.

**OPP.65:190**; CE.04\*:342





**Les dejeunerers.** Mougins. 1965. Offset lithograph in colors [After *Déjeuner sur l'herbe (Pour Margaret)*]. 36,8 x 53,3 cm. Christie's. #6, 2542, 04/03-04/12.

**OPP.65:193**

**Signature.** Mougins. 1965. Pastel on paper. 26,5 x 21 cm. Christie's. #4, 7873, 10/25/12. Formerly Charles Feld Collection.

**OPP.65:201**





**Peintre et modèle au fauteuil à bascule.**

Mougins. 12-February/1965. Linoleum cut printed in black. 53 x 64 cm. Sotheby's. #150, N08896, 11/01/12.

**OPP.65:210**; B.II:1852; Ba:1359

---

**Paysage.** Mougins. [1965]. Wool tapestry [After *Paysage*]. 170 x 237 cm. Private collection, Madrid.

**OPP.65:218**; CE.04\*:342; FC.00\*:113





**Prélude à l'après-midi d'un Faune, décor.**  
Mougins. 1965. Oil on cotton canvas [After *Prélude à l'Après-midi d'un Faune, étude de décor (VI)*].  
482,6 x 106,6 cm. Private collection, Germany.

**OPP.65:231**; BO.00\*:31; CC.01\*:26p

---

**Picador.** Mougins. 1965. India ink on paper. 25,4 x 34,2 cm. Dr. Patricia Pava Collection.

**OPP.65:232**; CC.01\*:48p





**Jean Cocteau et Son Temps.** Paris. 1965. Poster. 68,5 x 45,5 cm. Bonhams. #86, 18551, 09/23/10.

**OPP.65:243**

**Signature rouge (XV).** Mougins. 1965. Red soft pencil on paper. 25,7 x 19,8 cm. Private collection. Formerly Artcurial. #211, 2545, 06/05/14; Charles Feld Collection.

**OPP.65:249**





**Signature bleue (XIV).** Mougins. 1965. Blue soft pencil on paper. 25,7 x 19,8 cm. Private collection. Formerly Artcurial. #212, 2545, 06/05/14; Charles Feld Collection.

**OPP.65:250**

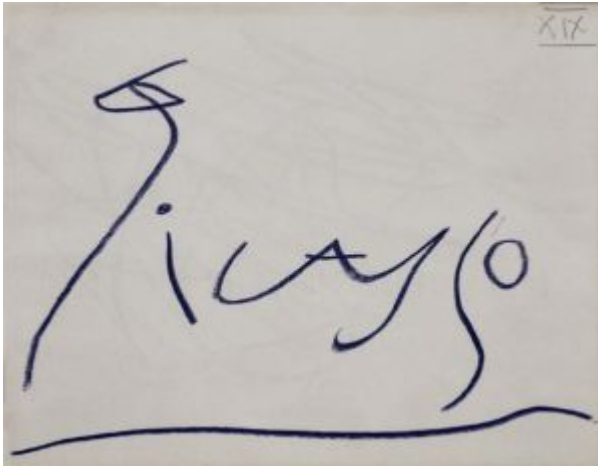
---

**Tête d'homme.** Mougins. 1965. Oil on canvas. S/U. Private collection.

**OPP.65:252;** LP.99:245p





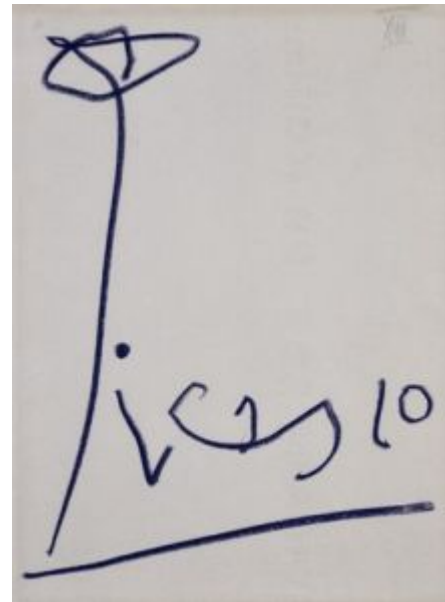


**Signature.** Mougins. 1965. Blue wax crayon on paper. 20 x 26 cm. Rouillac. #343, 06/08/09. Formerly Charles Feld Collection.

**OPP.65:257**

**Signature.** Mougins. 1965. Blue crayon on paper. 20 x 26 cm. Rouillac. #341, 06/08/09. Formerly Charles Feld Collection.

**OPP.65:258**





**Signature.** Mougins. 1965. Blue crayon paper. 20 x 26 cm. Rouillac. #342, 06/08/09. Formerly Charles Feld Collection.

---

**OPP.65:259**

**Visage.** Vallauris. 1965. Glazed ceramic large round plate. 42,3 cm. Sotheby's. #624, L16005, 02/05/16. Formerly Marina Picasso Collection.

---

**OPP.65:266**; GE.04\*:n/a





**Profils (Avec Carl Nesjar).** Marseille. 1965. Concrete. 600 cm.  
Lycée Sud de Marseille.

**OPP.65:273**; PP.65:198; CE.04:60

---

**Portrait d'homme.** Vallauris. [1965].  
Ceramic. 20 x 20 cm. Private collection.

**OPP.65:275**; CE.04\*:239





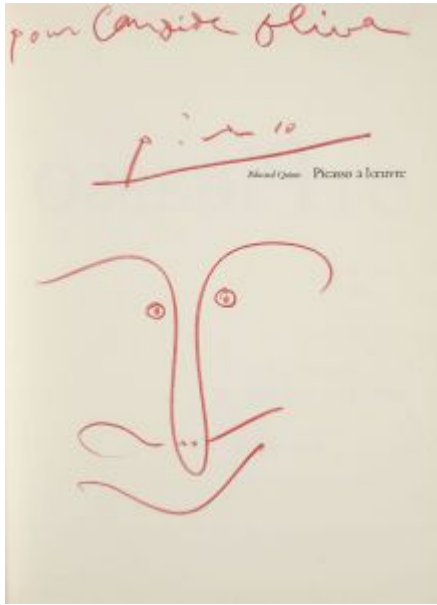
**Portrait d'homme.** Vallauris. [1965]. ceramic. 20 x 20 cm. Private collection.

**OPP.65:276**; CE.04\*:240

**Portrait à la tache jaune.** Mougins. [1965]. Wool tapestry [After *Portrait à la tache jaune*]. [230 x 153] 149 x 220 cm. Sotheby's. #124, L23005, 04/19/23. Also Custot Gallery, Dubai.

**OPP.65:278**; CE.04\*:338; DB.19\*:n/a





**Visage (Pour Candide Oliva).** Mougins. 1965. Red crayon on inside cover of Roland Penrose, *Picasso à l'œuvre*. 33 x 25,4 cm. Gormleys Fine Art, Belfast & Dublin. 2018. Formerly Artcurial. #30, 3183, 04/04/17.

**OPP.65:282**

**Picasso II.** Mougins. 1965. Crayon & pencil on paper. 21,2 x 26,9 cm. Sotheby's. #43, PF1760, 11/21-22/17.

**OPP.65:286**





**Footballeur.** Mougins. 1965. Cast clay. 31,7 x 23,6 x 6 cm. Catherine Hutin-Blay Collection, Paris. Formerly Jacqueline Roque Picasso Collection.

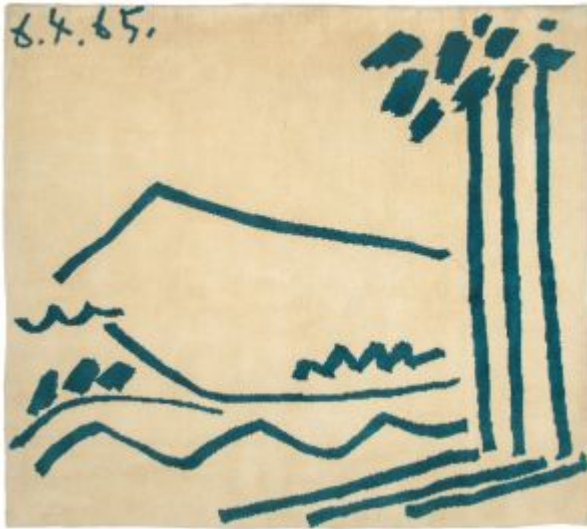
**OPP.65:292**; PD.19\*:103

**Footballeur.** Mougins. 1965. Cast clay. 28,8 x 24 x 15 cm. Catherine Hutin-Blay Collection, Paris. Formerly Jacqueline Roque Picasso Collection.

**OPP.65:293**; PD.19\*:104





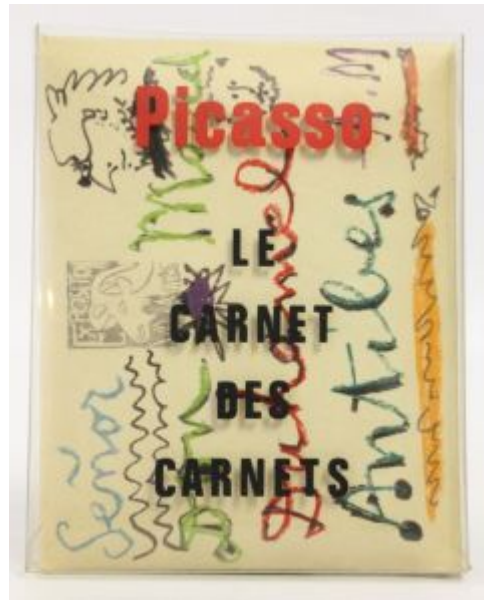


**La napoule.** Mougins. 1965. Wool tapestry. 192 x 215 cm. Custot Gallery, Dubai.

**OPP.65:298**

**Picasso de Poche: Le Carnet des Carnets.**  
Mougins. 1965. Ink. S/U. Musée Picasso, Paris.

**OPP.65:372**





**Picasso de Poche: Le Carnet des Carnets.** Mougins. 1965. Ink. S/U. Musée Picasso, Paris.

**OPP.65:373**

**Picasso de Poche: Le Carnet des Carnets.** Mougins. 1965. Ink. S/U. Musée Picasso, Paris.

**OPP.65:374**





**Picasso de Poche: Le Carnet des Carnets.**  
Mougins. 1965. Ink. S/U. Musée Picasso, Paris.

**OPP.65:375**

**Picasso de Poche: Le Carnet des Carnets.** Mougins.  
1965. Ink. S/U. Musée Picasso, Paris.

**OPP.65:376**





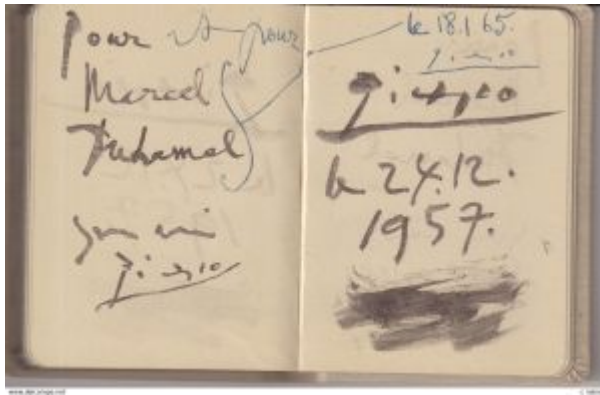
**Tête de femme.** Mougins. [1965]. Terre de faïence, modelled & painted, metal suspension ring. 4,2 cm. Espace Tajan. #22, 2121, 03/1/7/21.

**OPP.65:378**

**Oiseau (Figure découpée) (Avec Carl Nesjar).** Mougins. 1965. Concrete engraving. 500 cm. Vondelpark, Amsterdam.

**OPP.65:393**; PP.65:197; WS:648





**Picasso de Poche: Le Carnet des Carnets.**  
Mougins. 1965. Facsimile. S/U. Musée Picasso,  
Paris.

**OPP.65:400**

**Picasso de Poche: Le Carnet des  
Carnets.** Mougins. 1965. Facsimile. S/U.  
Musée Picasso, Paris.

**OPP.65:401**





**Picasso de Poche: Le Carnet des Carnets.**  
Mougins. 1965. Facsimile. S/U. Musée Picasso,  
Paris.

---

**OPP.65:402**

**Picasso de Poche: Le Carnet des  
Carnets.** Mougins. 1965. Facsimile. S/U.  
Musée Picasso, Paris.

---

**OPP.65:403**







**Picasso de Poche: Le Carnet des Carnets.**  
Mougins. 1965. Facsimile. S/U. Musée Picasso,  
Paris.

---

**OPP.65:404**

**Picasso de Poche: Le Carnet des  
Carnets.** Mougins. 1965. Facsimile. S/U.  
Musée Picasso, Paris.

---

**OPP.65:405**





**Composition au verre et compotier.** Mougins. 1965 [1972]. Etching with aquatint in colors, edition 300 [After *Composition au verre et compotier*]. [49 x 60] 49,3 x 60,4 cm. Christie's. #171, 9632, 04/25/01.

**OPP.65:016**

---

**Grosse tête, profil droit.** Vallauris. 1965. White earthenware figure. 28,5 cm. Galerie Gmurzynska, Zurich. Also Christie's. #142, 9315, 03/21/02.

**OPP.65:022**; AR:536





**Footballeur.** Vallauris. 1965. Ceramic figure, edition 50. 30 cm. Musée Magnelli de la Céramique, Vallauris. (Inv 1993.-4.-2). Also Christie's. #149, 9315, 03/21/02.

**OPP.65:023**; AR:538; IG.89\*:n/a; JW.01:52p; LE.21\*:320; LR.07\*:92

---

**Signature.** Mougins. 1965. Pastel on paper pour Le peintre et son modèle et Notre Dame de Vie. 26,7 x 21 cm. Sotheby's. #250, N07774, 05/17/02. Formerly Charles Feld Collection.

**OPP.65:025**





**Femme assise.** Mougins. 1965. Hand blown glass, edition 3. 15,2 cm. Sotheby's. #100, N07875, 02/12/03.

**OPP.65:033**

---

**Le chapeau aux raisins.** Mougins. 1965. Collotype in colors on Arches, edition 350 [After *Tête de jeune fille au chapeau garni de raisins*]. 53,2 x 44,5 cm. Christie's. #419, 1412, 09/28/04.

**OPP.65:052**





**Tête de profil.** Mougins. 1965. Slip casting, edition 50. [28,5] 31 cm. Sotheby's. #267, N08358, 11/01/07. Also Masterworks Fine Art Gallery. 2006.

---

**OPP.65:069**; AR:537

---

**La bouteille de rhum.** Mougins. 1965. Offset lithograph in colors on Arches' Edition 125 [After *La bouteille de rhum*]. 60,5 x 49,8 cm. Christie's. #383, 7063, 06/29/05.

---

**OPP.65:071**





**Maya en tablier rouge.** Mougins. 1965. Offset lithograph printed in colors, on Arches wove paper, edition 200 [After *Maya en tablier rouge*]. [73,03 x 53,34] 86 x 60,8 cm. Sotheby's. #341, N08123, 10/28/05.

**OPP.65:074**; HK.65:115p

**Le déjeuner sur l'herbe (d'après Manet) (Avec Carl Nesjar).** Mougins. 1965~1966. Cement, black granite & concrete engraving. 300 x 500 cm. Moderna Museet, Stockholm.

**OPP.65:011**; PP.66:129; WS:652;  
BA.23:254p; CE.04:67; HN.13:249p;  
IC.05:168p; PD.95:2p; SG.96:7.16;  
TG.94:38p

